

Scabies

should be followed carefully.

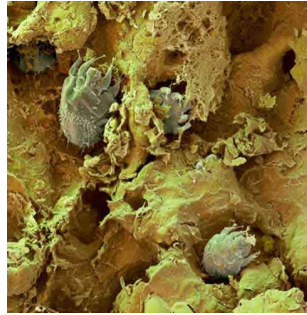
Scabicide lotion or cream should be applied to all areas of the body from the neck down to the feet and toes. Bedding, clothing, and towels used by infested persons or their close contacts at anytime during the three days before treatment should be decontaminated by washing in hot water and drying in a hot dryer, by dry-cleaning, or by sealing in a plastic bag for at least 72 hours. **Even after treatment, itching may still occur for a while.** If itching persists 2-4 weeks after treatment, retreatment may be necessary.

Prevention:

One can prevent Scabies by avoiding direct skin-to-skin contact with an infested person or with items such



as clothing or bedding used by an infested person. **Scabies treatment usually is recommended for members of the same household, particularly for those who have had prolonged skin-to-skin contact.**



McHenry County Department of Health
Division of Nursing
Communicable Disease
2200 N. Seminary Avenue
Woodstock, IL 60098
(815) 334-4500

MCDH

Sources:

<http://www.cdc.gov/parasites/scabies/disease.html>

<http://www.cellulitistreatment.us/351/the-facts-approximately-scabies/>

<http://www.skin-care-health.org/scabies.html>

<http://www.picturesofscabies.org/pictures-of-scabies-on-skin/>

SCABIES

Questions and Answers.



McHenry County
Department of Health
Division of Nursing
Communicable Disease
2200 N. Seminary Avenue
Woodstock, IL 60098
(815) 334-4500

Scabies

Scabies is a disease caused by an infestation of the human itch mite in the skin. **Scabies is most commonly characterized by an intense itching and a pimple-like rash.** The scabies mite is a parasite that burrows into the top layer of the skin and lays its eggs. There is usually only 10-15 mites per person, which is enough to cause an infestation in the skin.

Symptoms:

The most common symptoms, the intense itching and the pimple-like rash, are caused by a sensitization of the skin to the proteins and feces of the mite. The severe itching known as pruritus is the earliest symptom and is most severe at night. The pimple-like



rash is the second most common symptom. The rash can appear in a number of places including: between the fingers, wrist, elbow, armpit, penis, nipples, waste, buttocks and shoulder blades.

Transmission:

Scabies is caused by an infestation of the skin by the human itch mite. An infestation begins when an adult female scabies mite burrows into the upper layer of the skin where it lives and deposits its eggs. The microscopic scabies mite is usually passed by the direct, prolonged, skin-to-skin contact with a person who already has an infestation. Scabies can be passed easily from an infested person to someone in their household or to their sexual partner. The



first time scabies is transmitted it can take up to six weeks for symptoms to occur. **It is important to know that the infested person can still spread scabies when no symptoms are present. Subsequent infestations will happen quicker.** An infested person can spread scabies even if he or she has no symptoms. Animals do not spread human scabies.

Treatment:

Scabicides are the name of product to treat Scabies because they kill scabies mites; some also kill mite eggs. Scabicides used to treat human scabies are only prescribed by a doctor. The instructions for the scabicides

