

McHENRY COUNTRY CLUB  
GOLF COURSE

35

36

31

**McHENRY COUNTY, ILLINOIS**

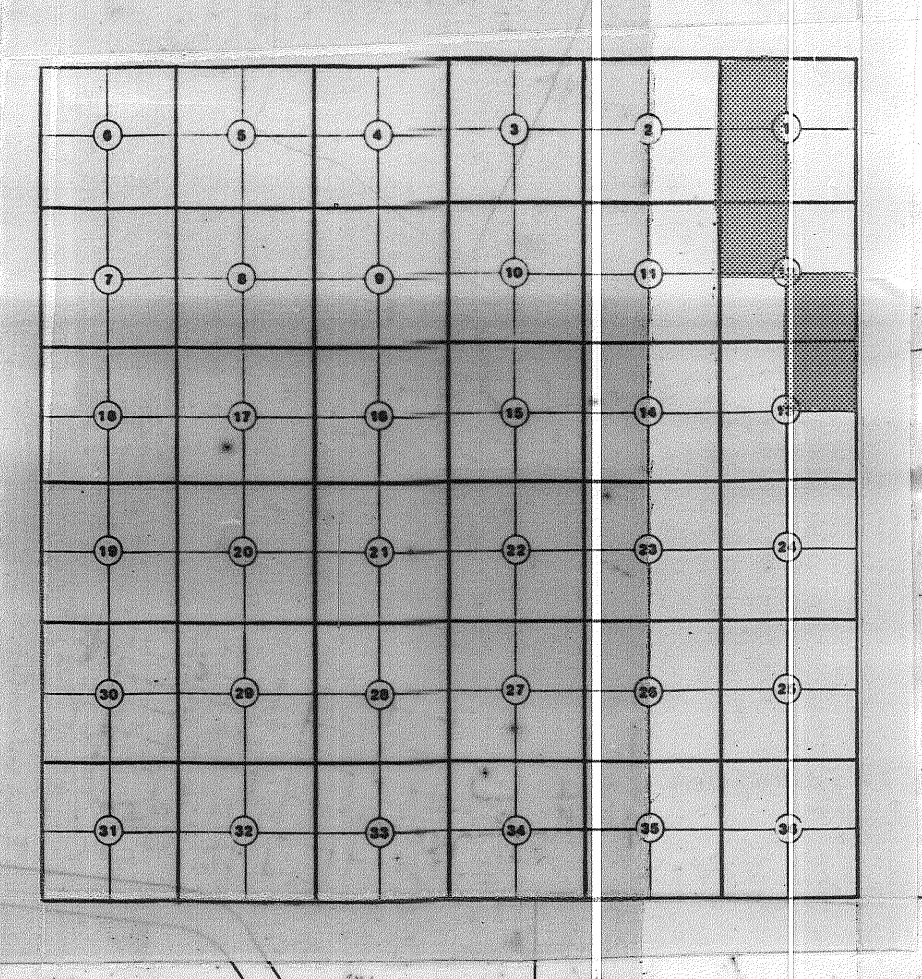
APPROXIMATE BOUNDARIES  
OF EXPANDED STATE PARK

**SITES 3730-4069, 4081-4086**

McHENRY TWP  
NUNDA TWP

location inset

YEAR	1980	1981	1982	1983	1984
1985	1986	1987	1988	1989	1990
1991	1992	1993	1994	1995	1996
1997	1998	1999	2000	2001	2002
2003	2004	2005	2006	2007	2008
2009	2010	2011	2012	2013	2014
2015	2016	2017	2018	2019	2020



**MAP SCALE 1"=400'**

APPROXIMATE BOUNDARIES  
OF EXPANDED STATE PARK

11

2

1

6

13

14

15

Mc HENRY DAM  
& STATE PARK

3789  
3788  
3787  
3786  
3785

3798  
3797  
3796  
3795  
3794  
3793  
3792  
3791  
3790  
3789

3795  
3794  
3793  
3792  
3791  
3790  
3789  
3788  
3787  
3786  
3785

FOX RIVER

EDISON

COMM

SUNSET

W JUSTEN

COLBY

POINT

STILLING

DR