

Water Resources Action Plan
Local Water Quantity and Quality

Stormwater Management and Groundwater Recharge



Presentation Outline

1. Introduction
2. Protection of Groundwater Quantity
3. Protection of Groundwater Quality
4. Questions



Introduction



Introduction

- Development Increases the Rate of Runoff



Introduction

- Development Increases the Volume of Runoff



Introduction

- Runoff from Developed Areas is Polluted



Protection of Groundwater Quantity

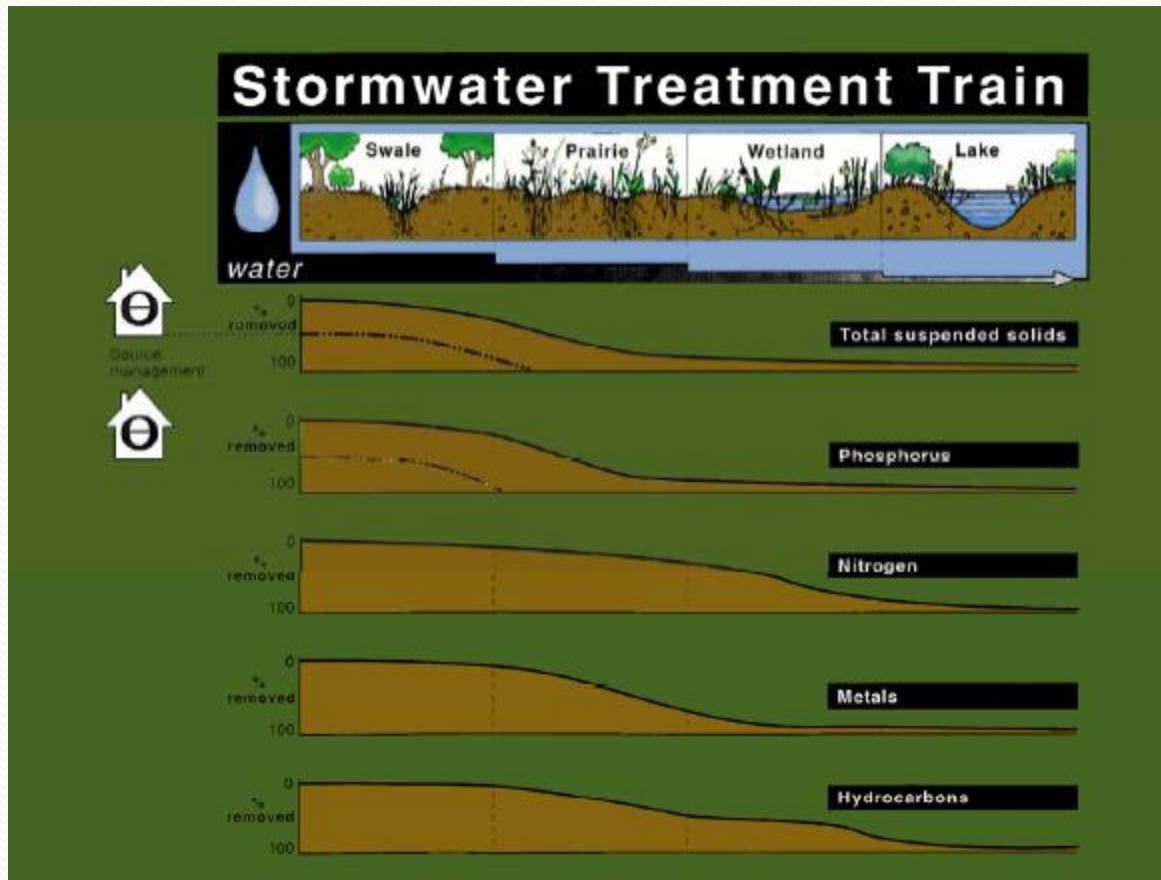


Protection of Groundwater Quantity

- Limit Post-Development Runoff Volume to Pre-Development Runoff Volume
 - Encourage Infiltration



Protection of Groundwater Quantity



Protection of Groundwater Quantity

- Utilize WI NR 151 Subchapter III as a Guideline
 - Residential Standard
 - Commercial Standard
 - Exemptions and Exceptions



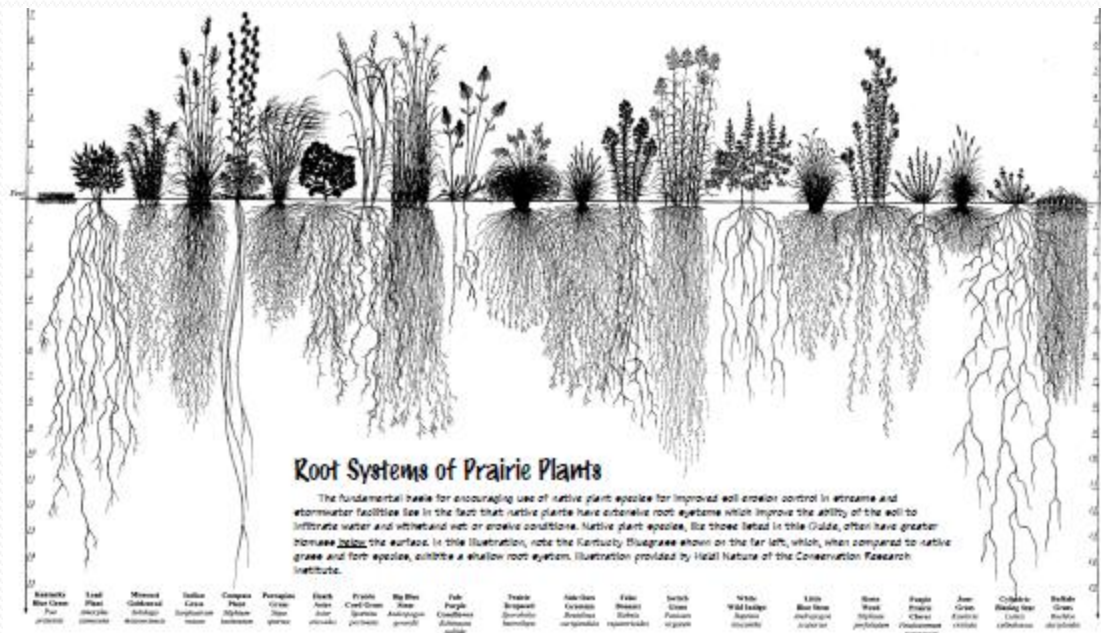
Protection of Groundwater Quantity

- Encourage Distributed Small Scale Controls



Protection of Groundwater Quantity

- Encourage Natural Vegetation



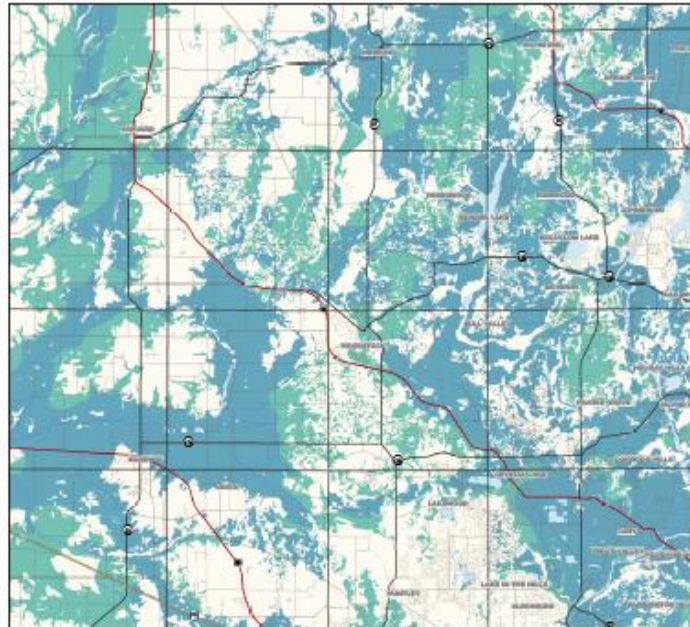
Protection of Groundwater Quantity

- Conservation Design
 - Limit Mass Grading
 - Limit/Disconnect Impervious Areas



Protection of Groundwater Quantity

- Encourage Retrofitting of Existing Facilities
- Prioritize Restoration of Recharge Areas



Protection of Groundwater Quality



Protection of Groundwater Quality

- Promote Infiltration of Clean Runoff



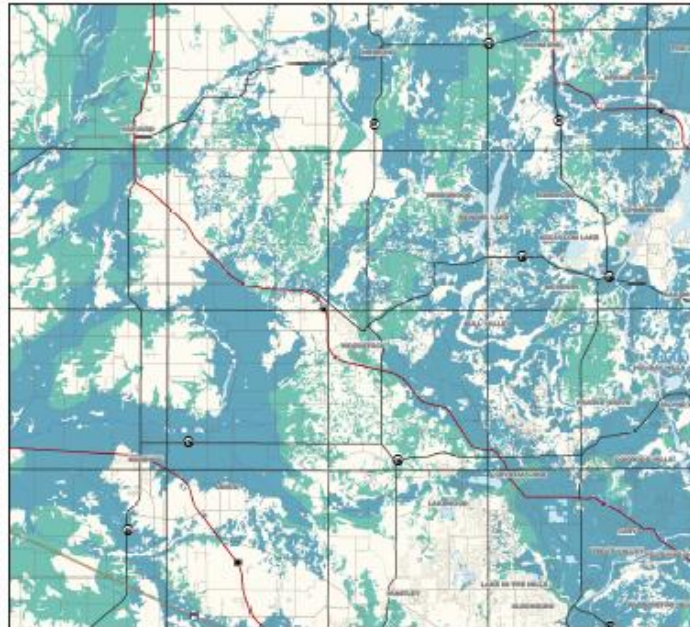
Protection of Groundwater Quality

- Encourage Infiltration Where Groundwater Pollution will not Result



Protection of Groundwater Quality

- Restrict Drywells within SARAs
- Implement BMPs for Drywells in Other Areas



Questions

Mark Phipps, P.E., CFM – Chief Stormwater Engineer

McHenry County Department of Planning and Development

2200 North Seminary Avenue – Woodstock, Illinois 60098

Phone: 815.334.4560

Fax: 815.337.3720

