

88°40'0"W 88°35'0"W 88°30'0"W 88°25'0"W 88°20'0"W 88°15'0"W

42°27'30"N

42°27'30"N

42°22'0"N

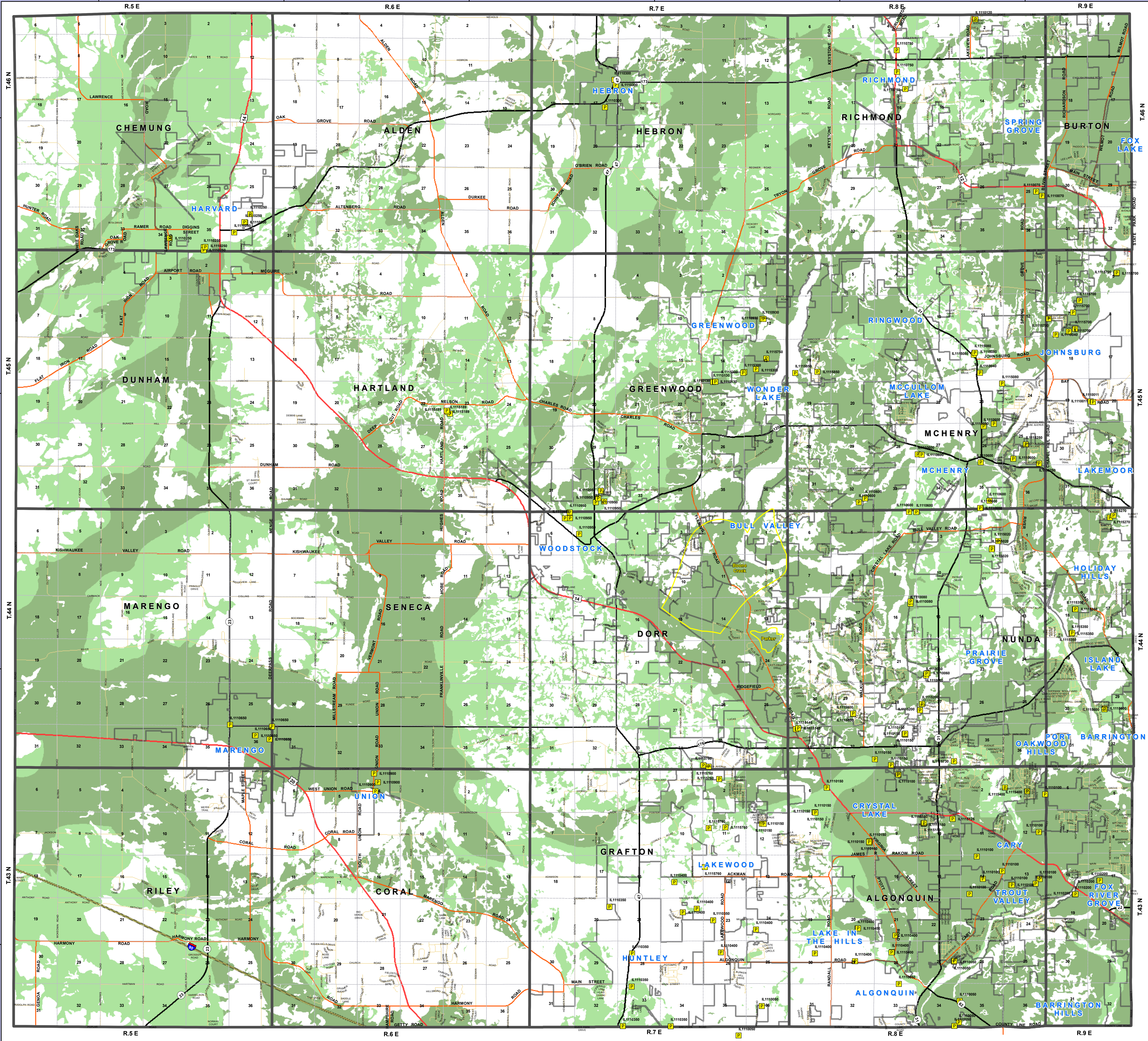
42°22'0"N

42°16'30"N

42°16'30"N

42°11'0"N

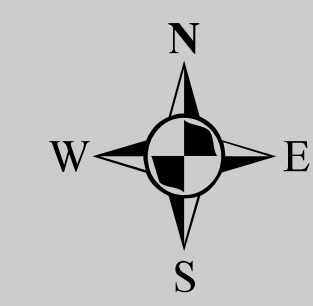
42°11'0"N



88°40'0"W 88°35'0"W 88°30'0"W 88°25'0"W 88°20'0"W 88°15'0"W

- Legend**
- McHenry Pumpage
 - Class 3 Groundwater
 - Townships
 - Sections
 - Corporate
 - ROADS
 - County
 - Interstate
 - State
 - Townships
 - US Route
- Sensitive Aquifer Recharge Areas**
- A
 - B

McHenry County Sensitive Aquifer Recharge Areas



1 inch equals 4,500 feet
At a print size of 36" x 42"

Data Source

Pump: Illinois EPA, Groundwater Section

Critical Recharge: McHenry County Soil and Water Conservation District

INFORMATION ON THIS MAP MAY CONTAIN INACCURACIES OR TYPOGRAPHICAL ERRORS. INFORMATION MAY BE CHANGED OR UPDATED WITHOUT NOTICE. INFORMATION ON THIS MAP IS PROVIDED "AS-IS" WITHOUT WARRANTY OF ANY KIND, EITHER EXPRESS OR IMPLIED, INCLUDING (WITHOUT LIMITATION) ANY IMPLIED WARRANTIES OF MERCHANTABILITY OR FITNESS FOR A PARTICULAR PURPOSE. IN NO EVENT WILL MCHENRY COUNTY BE LIABLE TO YOU OR TO ANY THIRD PARTY FOR ANY DIRECT, INDIRECT, INCIDENTAL, SPECIAL OR EXEMPLARY DAMAGES OR LOST PROFIT RESULTING FROM ANY USE OR MISUSE OF THIS INFORMATION. INFORMATION HEREIN HAS BEEN REPRODUCED FROM ORIGINAL SOURCES. INFORMATION PRODUCED ON THIS MAP SHOULD NOT BE USED IN PLACE OF A SURVEY OR LEGAL DOCUMENTS.

Map produced by McHenry County GIS Dept
Date: October 2008