

88°40'0"W 88°35'0"W 88°30'0"W 88°25'0"W 88°20'0"W 88°15'0"W

42°27'30"N

42°27'30"N

42°22'0"N

42°22'0"N

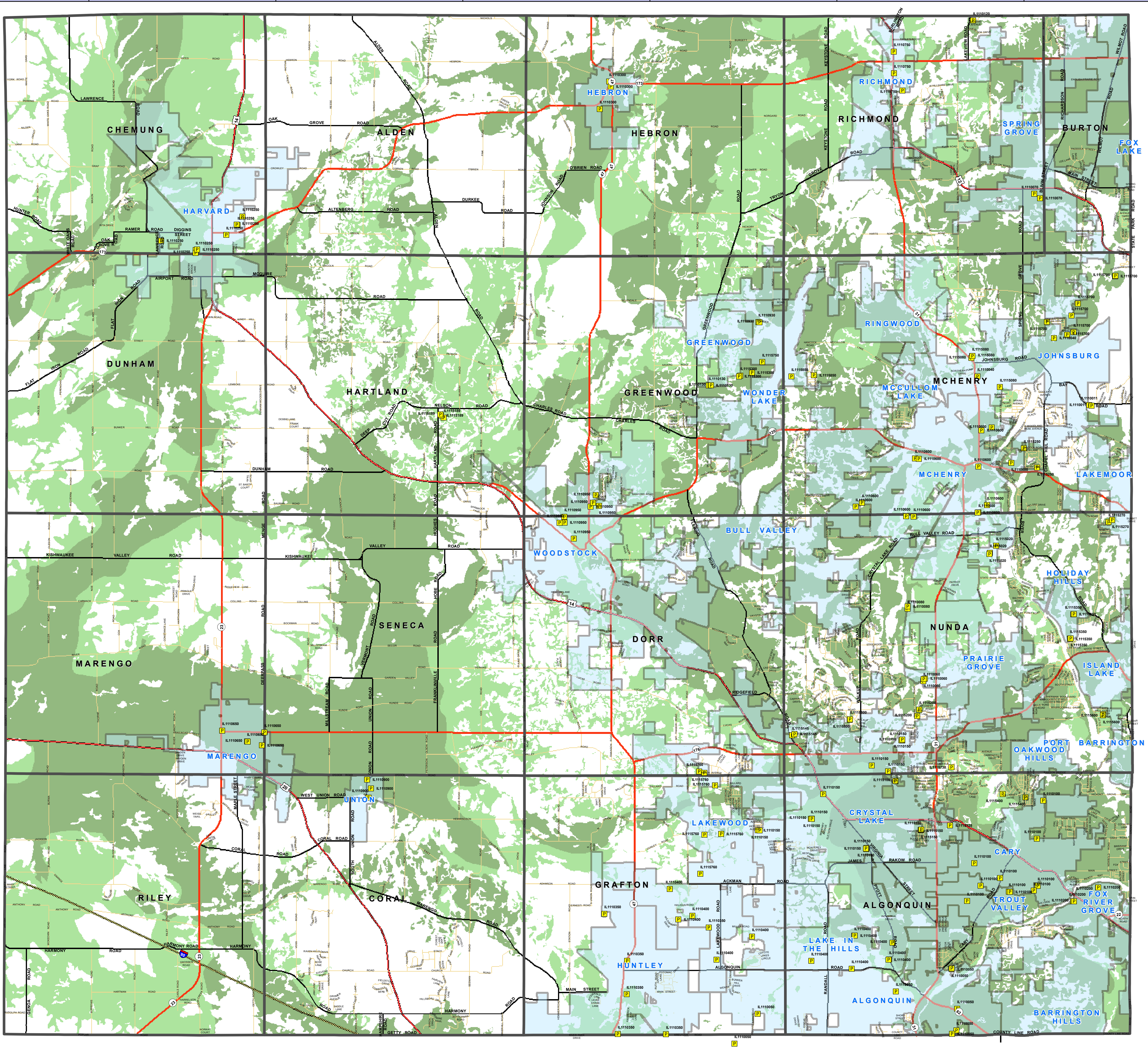
42°16'30"N

42°16'30"N

42°11'0"N

42°11'0"N

88°40'0"W 88°35'0"W 88°30'0"W 88°25'0"W 88°20'0"W 88°15'0"W

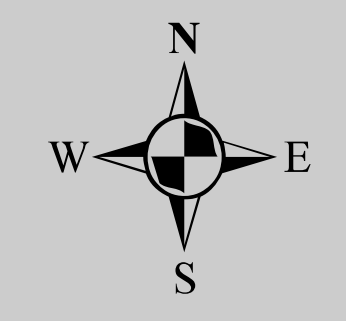


**Legend**

- McHenry Pumpage
- ROADS**
- County
- Interstate
- State
- Townships
- US Route
- High Potential Recharge Areas**
- A
- B
- Townships
- Corporate

# McHenry County Areas With High Potential For Ground Water Recharge

INFORMATION ON THIS MAP MAY CONTAIN INACCURACIES OR TYPOGRAPHICAL ERRORS. INFORMATION MAY BE CHANGED OR UPDATED WITHOUT NOTICE. INFORMATION ON THIS MAP IS PROVIDED "AS-IS" WITHOUT WARRANTY OF ANY KIND, EITHER EXPRESS OR IMPLIED, INCLUDING (WITHOUT LIMITATION) ANY IMPLIED WARRANTIES OF MERCHANTABILITY OR FITNESS FOR A PARTICULAR PURPOSE. IN NO EVENT WILL MCHENRY COUNTY BE LIABLE TO YOU OR TO ANY THIRD PARTY FOR ANY DIRECT, INDIRECT, CONSEQUENTIAL, SPECIAL OR EXEMPLARY DAMAGES OR LOST PROFIT RESULTING FROM ANY USE OR MISUSE OF THIS INFORMATION. INFORMATION HEREIN HAS BEEN REPRODUCED FROM ORIGINAL SOURCES. INFORMATION PRODUCED ON THIS MAP SHOULD NOT BE USED IN PLACE OF A SURVEY OR LEGAL DOCUMENTS.



1 inch equals 4,509 feet  
At a print size of 36" x 42"

**Data Source**

Pump: Illinois EPA, Groundwater Section  
Critical Recharge: McHenry County Soil and Water Conservation District

Map produced by McHenry County GIS Dept  
Date: August 2008