

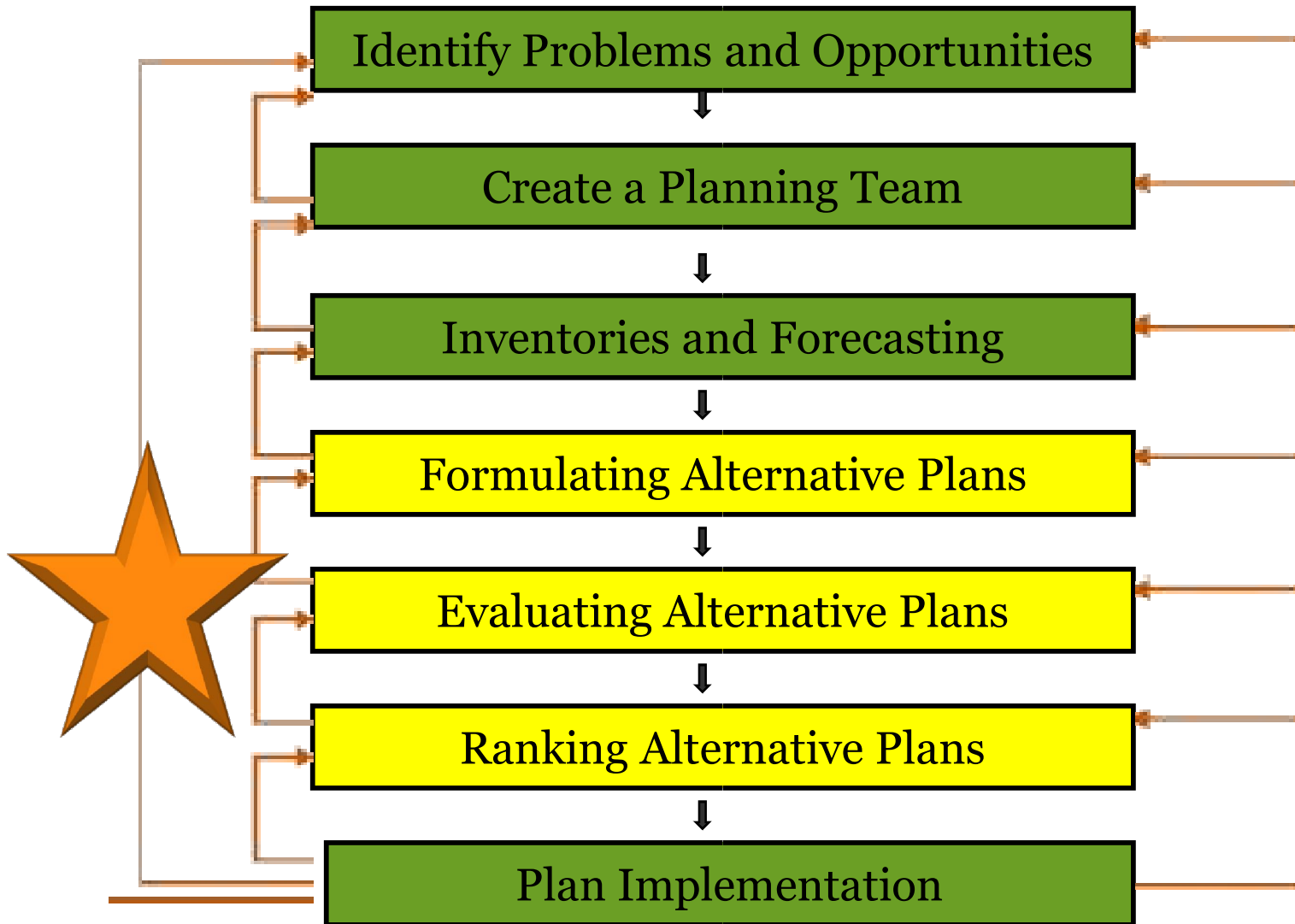
Groundwater Protection Program



TUESDAY, OCTOBER 14, 2008

Did You Know:

Integrated Water Resources: 7 Step Planning Process



Guest Presenters:



Innovative Landscaping Approaches

Roger Bannerman

Water Resources Management Specialist, Wisconsin DNR

&

Infiltration of Stormwater and the County's Stormwater Management Ordinance

Mark Phipps

McHenry County Stormwater Engineer

Project Update: Illinois State Geological Survey



• **3 – D Geological Mapping**

○ Completed Mapping Locations:

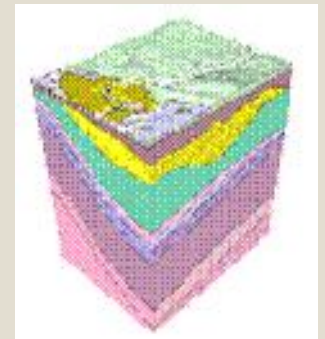
- ✦ Martini Tract near Hebron Trail
- ✦ Intersection of Raycraft Road and Jankowski Road
- ✦ Cold Spring Road (Wold Tract) near Wonder Lake
- ✦ Moraine Hills State Park
- ✦ Butternut Forest Preserve – Crystal Lake
- ✦ Pleasant Valley Conservation Area

○ In Progress:

- ✦ Prairieview Education Center
- ✦ SWCD Property on Dean Street - Woodstock

○ Upcoming:

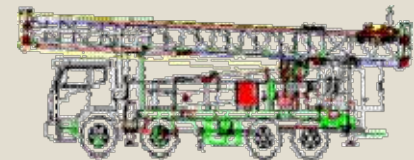
- ✦ MCCD land at East end of Behan Road (East of Prairieview)



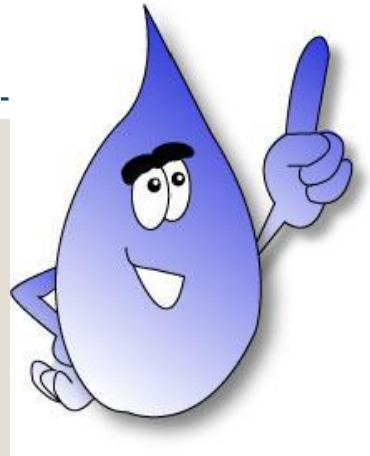
Project Update: Observation Well Network



- Began drilling on Tuesday, September 23, 2008
- Using Rotosonic Drilling Technique
 - ✦ Continuous Core Technology
- Completed Wells:
 - Greenwood Township (nest of 2 wells)
 - Nunda Township (nest of 2 wells)
 - McHenry Township (nest of 2 wells)
 - Richmond Township (nest of 3 wells)
 - Hebron Township (nest of 2 artesian wells)



Intergovernmental Liaison



**TAMMY
VALENTINE-GARZA**

McHenry County Test Well



Richmond Location



Equipment Set-up



Preparing 10 foot Drill Sections





Pulling Soil Sample from Drill Rig



Preparing Next 10 Foot Well Section



Removal of Soil Sample Sections





Samples are placed in order of how they are drilled.



Samples are Evaluated



Soil Samples are taken...



And Recorded for Illinois State Geological Survey



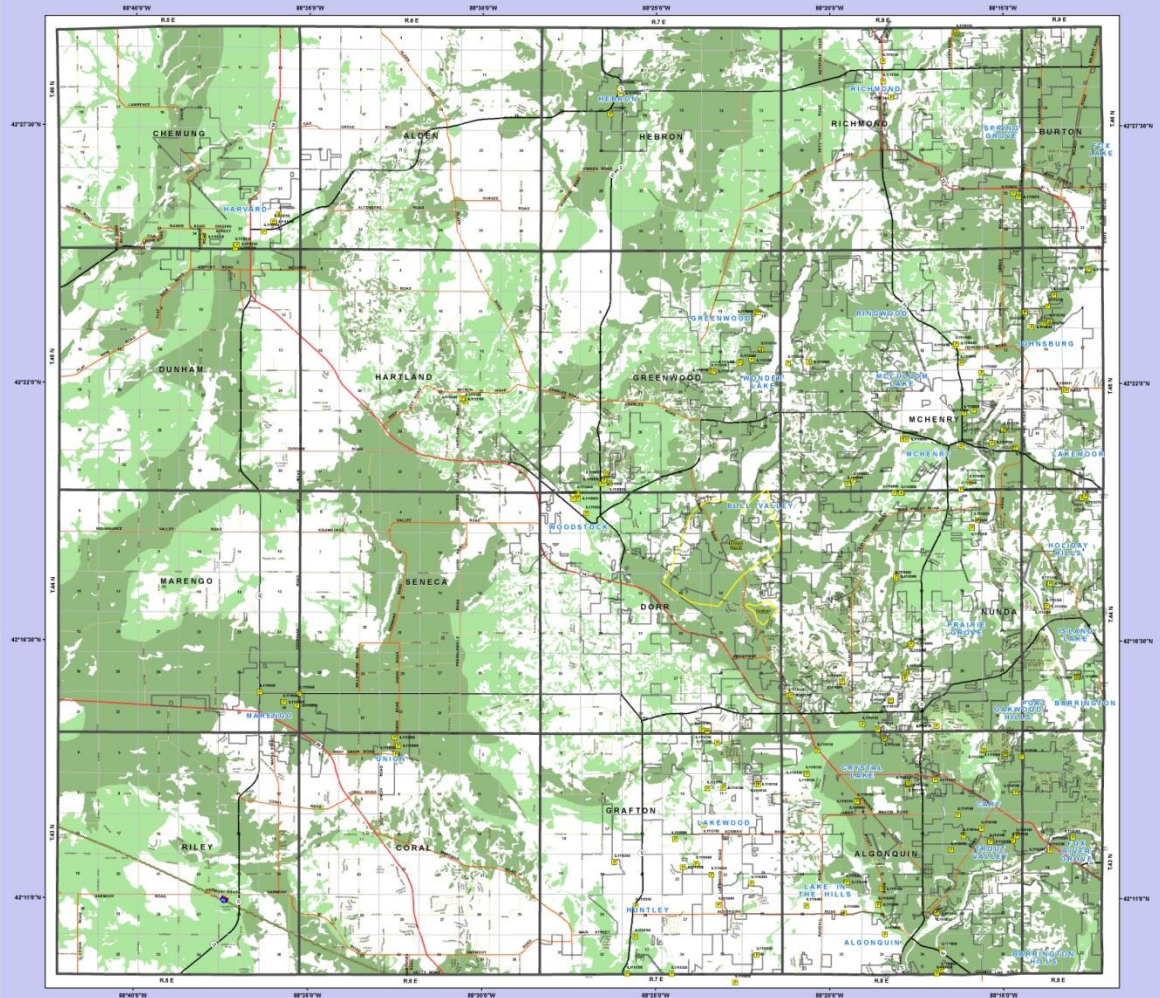


Visit a Drilling Site

Recharge Areas Update



McHenry County Sensitive Aquifer Recharge Areas



- Legend**
- McHenry Pumpage
 - Class 3 Groundwater
 - Townships
 - Sections
 - Corporate ROADS
 - County
 - Interstate
 - State
 - Townships
 - US Route
- Sensitive Aquifer Recharge Areas**
- A
 - B

McHenry County Sensitive Aquifer Recharge Areas



1 inch equals 4,600 feet
At a print size of 30" x 42"

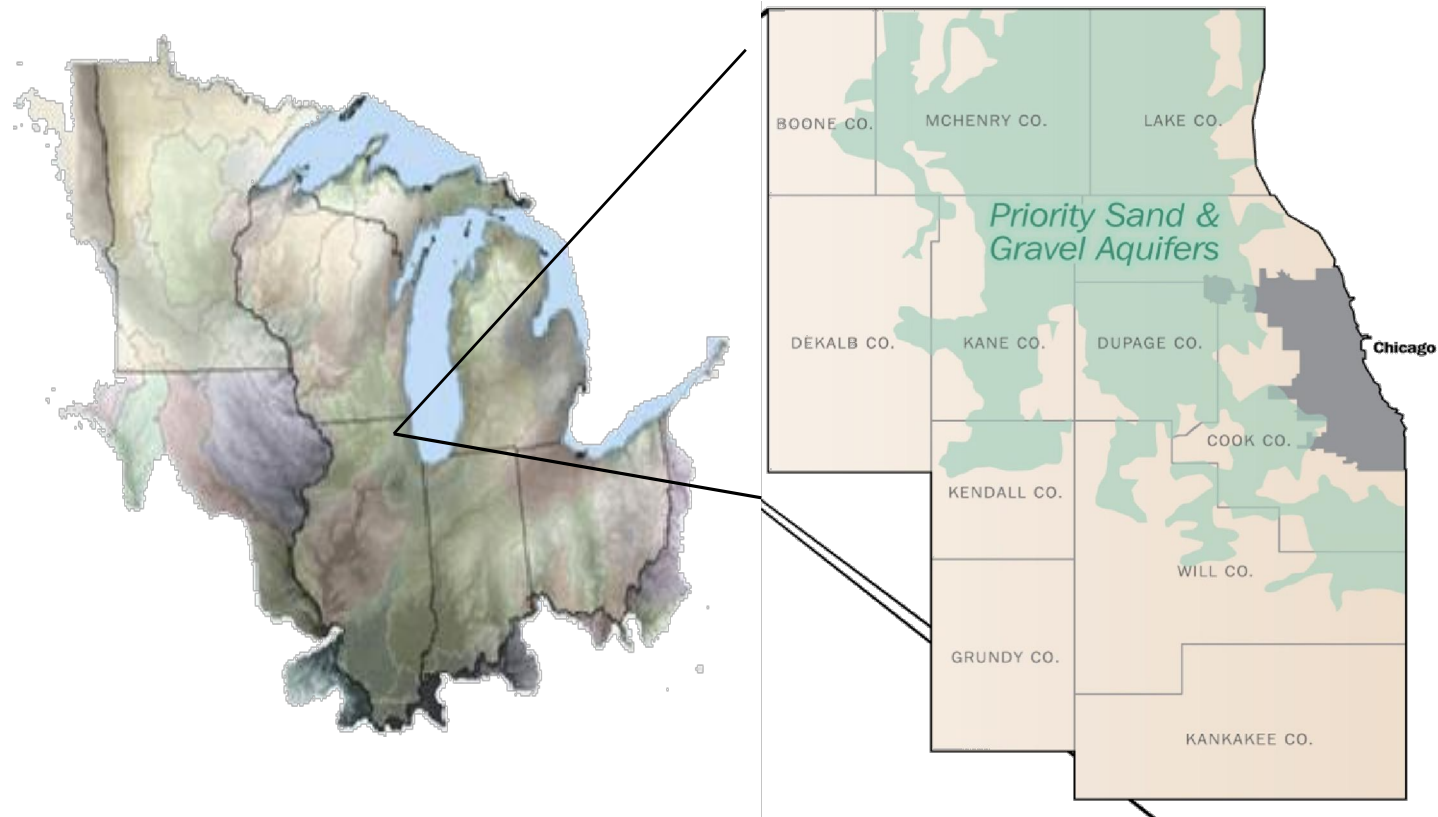
Data Source

Pump: Illinois EPA, Groundwater Section
Critical Recharge: McHenry County Soil and Water Conservation District

Map produced by McHenry County GIS Dept
Date: October 2008

INFORMATION ON THIS MAP MAY CONTAIN MISTAKES OR TYPOGRAPHICAL ERRORS. INFORMATION MAY BE CHANGED OR UPDATED WITHOUT NOTICE. INFORMATION ON THIS MAP IS PROVIDED "AS IS" WITHOUT WARRANTY OF ANY KIND, EITHER EXPRESS OR IMPLIED, INCLUDING BUT NOT LIMITED TO THE WARRANTIES OF MERCHANTABILITY, FITNESS FOR A PARTICULAR PURPOSE, AND NONINFRINGEMENT. THE INFORMATION HEREON HAS BEEN REPRODUCED FROM ORIGINAL SOURCES. REPRODUCTION OF THIS MAP SHOULD NOT BE USED IN PLACE OF A FIDELITY OF LEGAL DOCUMENTS.

CMAP: Regional Water Supply Planning Group Update



For More Information:

<http://www.cmap.illinois.gov/watersupply/minutes.aspx>

Upcoming Events



- **Source Water Protection Workshop**
 - Illinois Section American Water Works Association (ISAWWA) and Illinois Environmental Protection Agency (IEPA)
 - ✦ October 29, 2008
 - ✦ 8:30 AM – 3:30 PM
 - ✦ Hickory Grove Conference Center, Rochelle, IL

- **Regional Water Supply Planning Group**
 - October 28, 2008
 - ✦ 9:30 am – 1:00 pm
 - ✦ CMAP offices, Sears Tower

- **McHenry County Climate Change Forum:**
 - Local Solutions to the Climate Crisis
 - McHenry County College Conference Center
 - October 22nd at 7:00 p.m.

Upcoming Events



- **Sustainable Cities Symposium**
 - October 24, 2008
 - Lisle, IL
 - <http://www.greensolutions.il.gov>
- **Beginning Bioneers Symposium**
 - November 8, 2008 from 9:30 am – 3:00 pm
 - McHenry County College
 - www.mcbioneers.com/
- **All-Consuming: Conversations on Oil and Water**
 - November 18 at 6:30pm
 - Chicago History Museum, 1601 N Clark St., Chicago, IL
 - More info: <http://www.prairie.org/oilandwater>

Final Subcommittees

- **Stakeholder Standards**
- **Impacts on Natural Systems**
- **Wastewater Effluent Reuse**
- **County-wide Contingency Planning**



Next Meeting: Tuesday, November 18, 2008



- **Subcommittee Final Reports**
&
- **Final Task Force meeting before
winter recess**

Questions?



Contact Information:



Cassandra McKinney
Water Resource Manager
McHenry County Government
2200 N. Seminary Avenue
Woodstock, IL 60098-2637

Phone: (815) 334-4213

Fax: (815) 338-3991

E-mail: clmckinney@co.mchenry.il.us

Website: www.mchenryh2o.com