



GROUNDWATER PROTECTION PROGRAM

March 10, 2009



DID YOU KNOW:

- McHenry County Schools Environmental Education Program (MCSEEP) offers water lessons for:

- 2nd Grade:

- Making Every Drop Count
(Water Cycle -40 Min.)

- 8th Grade:

- What's in our Water?
(Groundwater - 50 Min.)



INTERGOVERNMENTAL LIAISON



Tammy Valentine

OBSERVATION WELLS UPDATE

- Data Loggers are installed in the majority of the wells
 - Real-time information is being collected
 - Information will be processed quarterly

- Other data that will be incorporated over time:
 - Stream Gauge Readings
 - Remote Weather Imaging Station Information
 - Water Quality

- Additionally:
 - Well logs will be added to the 3-D model being assembled by the Illinois State Geological Survey (ISGS)
 - Water levels and groundwater flow information will be used to refine a hydrologic flow model of the county by the Illinois State Water Survey (ISWS)



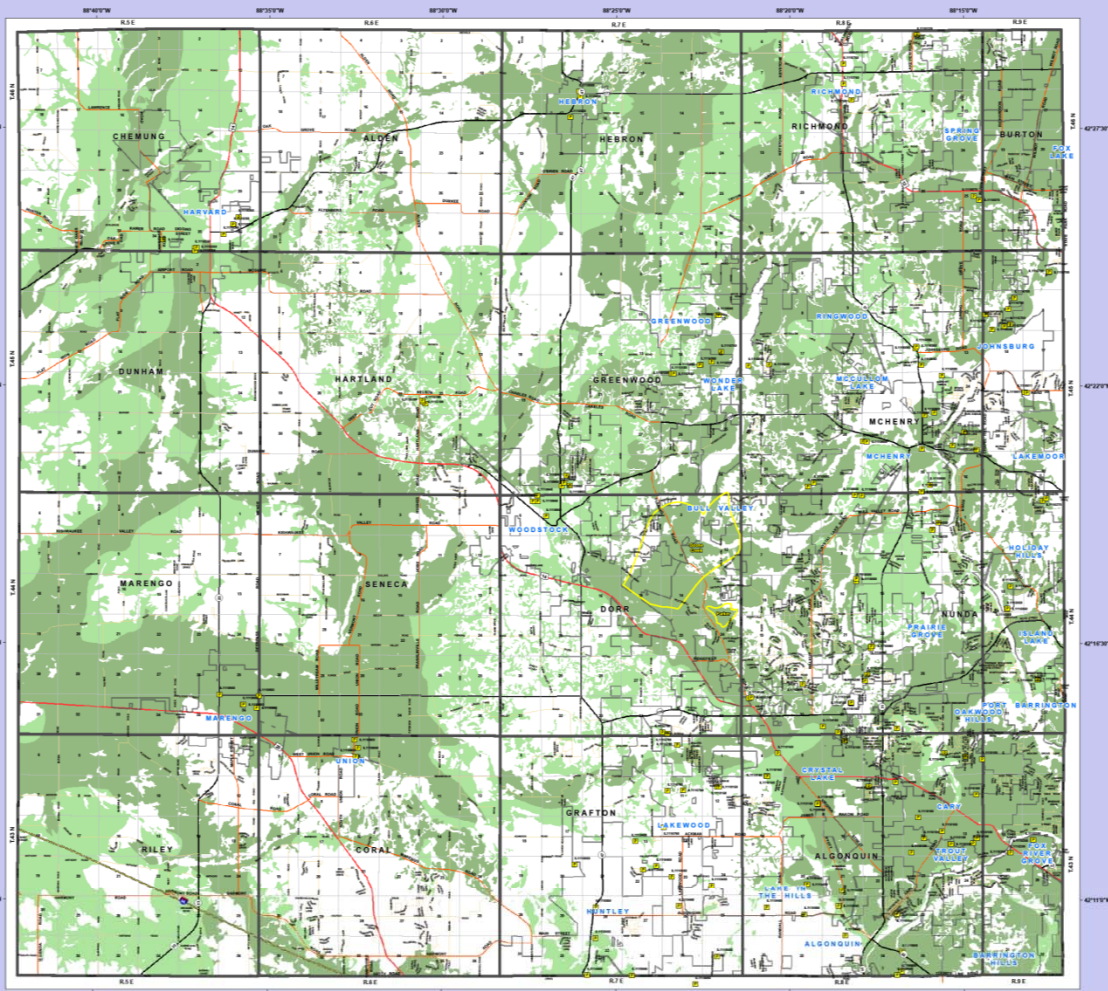
Groundwater Recharge “Draft” Policy

Initial Review: March 10, 2009

Final Review: July 14, 2009



SENSITIVE AQUIFER RECHARGE MAP



- Legend**
- McHenry Pumpage
 - Class 3 Groundwater
 - Townships
 - Sections
 - Corporate
 - ROADS
 - County
 - Interstate
 - State
 - Townships
 - US Route
 - Sensitive Aquifer Recharge Areas
 - A
 - B

McHenry County Sensitive Aquifer Recharge Areas

Information on this map was compiled based on GIS information provided by the Illinois EPA, Groundwater Section. Information on this map is provided "as is" without warranty of any kind, either expressed or implied. The user assumes all liability for any use of the information on this map. Information on this map was compiled from various sources. Information published on this map should not be used in place of a survey or legal document.



1 inch equals 4,500 feet
At a print size of 36" x 42"

Data Source

Pump: Illinois EPA, Groundwater Section
Critical Recharge: McHenry County Soil and Water Conservation District

Map produced by McHenry County GIS Dept.
Date: October 2008



Groundwater Protection Program:

2009 Policy Review

Tuesday, February 10 at 2:00 PM

Pavement De-icing

Tuesday, March 10 at 2:00 PM

Recharge Areas

Tuesday, April 14 at 2:00 PM

Pollution Prevention

Groundwater Quality Protection

Tuesday, May 12 at 2:00 PM

Impacts on Natural Areas

Conservation Design

Tuesday, June 9 at 2:00 PM

Water Conservation

Wastewater Effluent Re-use

Tuesday, July 14 at 2:00 PM

Water Supply Contingency Planning

Stakeholder Standards

TECHNICAL COMMITTEE

○ Today's Agenda:

- Groundwater Recharge
- Pollution Prevention
- Groundwater Quality
- Natural Areas Map Review



- Will Adjourn by 4:30 PM





Questions?

Contact Information:

**Cassandra McKinney
Water Resource Manager
McHenry County Government
2200 N. Seminary Avenue
Woodstock, IL 60098-2637**

Phone: (815) 334-4213

Fax: (815) 338-3991

E-mail: clmckinney@co.mchenry.il.us

Website: www.mchenryh2o.com

