



McHenry County - Modine Facility:

- Reputation - Modine is proud of its record as a responsible corporate citizen. Modine has been chosen by Business Ethics Magazine as one of the "100 Best Corporate Citizens" for seven consecutive years, as long as the list has been compiled, always scoring very high in the environment category.
- Participation - Modine has actively participated in the Illinois Environmental Protection Agency's (IEPA's) Voluntary Site Remediation Program.
- Groundwater - As part of IEPA's Voluntary Program, Modine conducts routine quarterly groundwater sampling and has for more than a decade. The results are provided to the Illinois EPA.
- Drinking water - Modine uses an on-site well for its drinking water. Modine's drinking water has been routinely monitored for more than a decade. It is tested by the McHenry County Department of Health and an independent laboratory. Test results are provided to the Illinois Department of Public Health.
- Promise to Employees- As part of Modine's five Global Commitments - Responsible Relationships, Corporate Citizenship, Applied Innovation, Global Competitiveness and Financial Integrity - we have high standards for health and safety for our employees. The majority of our McHenry County employees not only work in McHenry County, but live there as well.

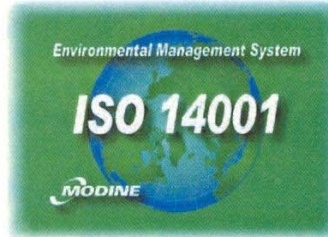


Energy Conservation
Presidential Initiative



Awards won by Modine's McHenry Facility

- President's Award for Best Plant*
- President's Initiative for Energy Reduction*
- Achieved ISO 14001 Standard for Environmental Management*
- Modine Safety Star Award*
- President's Challenge for Scrap Reduction*
- Caterpillar Recertification*
- Chrysler Gold Pentastar Award*
- Chrysler Quality Excellence Award*
- Denso Annual Achievement Award*
- Ingersoll Rand Supplier Excellence Award*
- Mack Supplier Delivery Award*



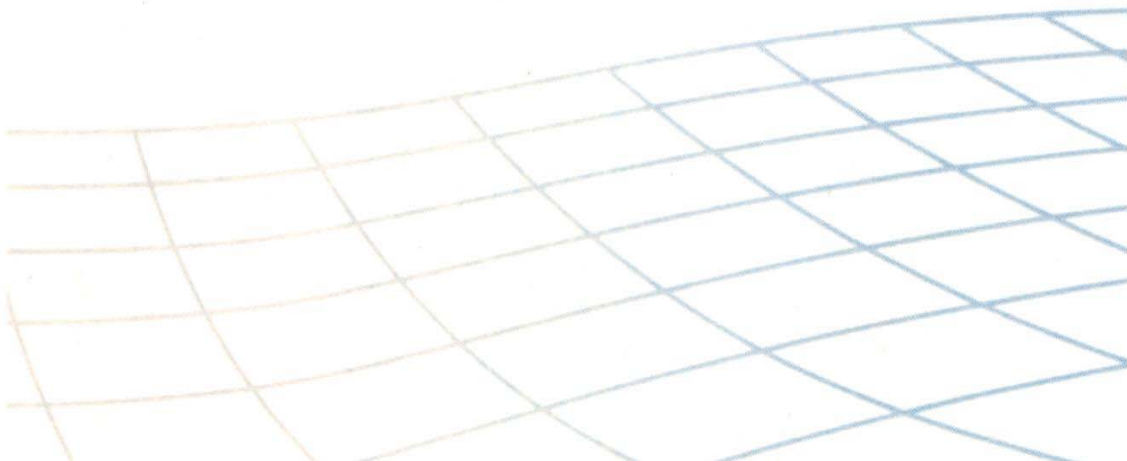
30% Scrap



Reduction

Awards won by Modine

- 2000-2007 Business Ethic Magazine "100 Best Corporate Citizens"*
- 2002-2004 First Place in Environmental Category*
- Domini 400 SocialSM Index (DS 400)*



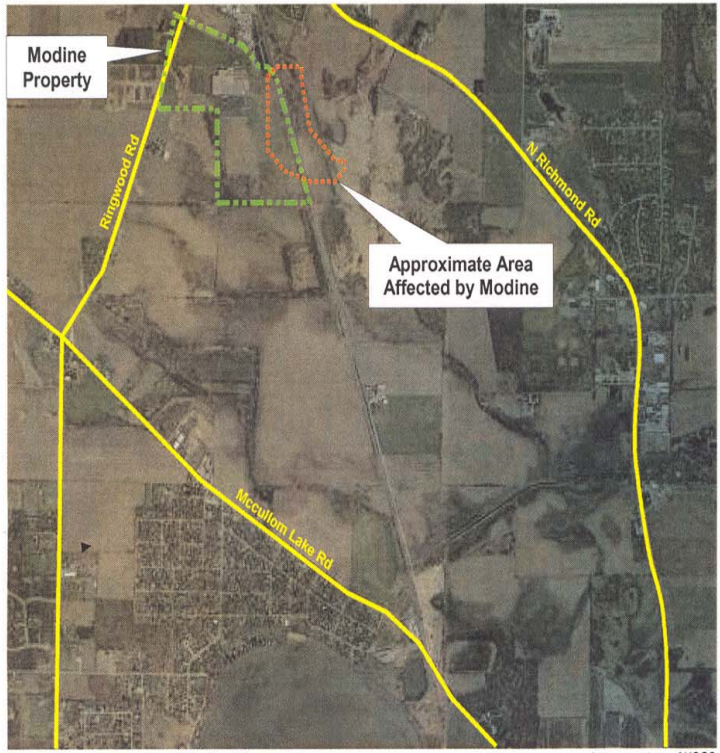


Image courtesy of USGS



APPROXIMATE SCALE
1" = 1750'



STS Consultants
11425 W. Lake Park Drive
Milwaukee, WI 53224
414-359-3030
www.stsconsultants.com
Copyright ©2006, By: STS Consultants, Ltd.

This map is based on drawings prepared for Illinois EPA by STS Consultants on behalf of Modine

