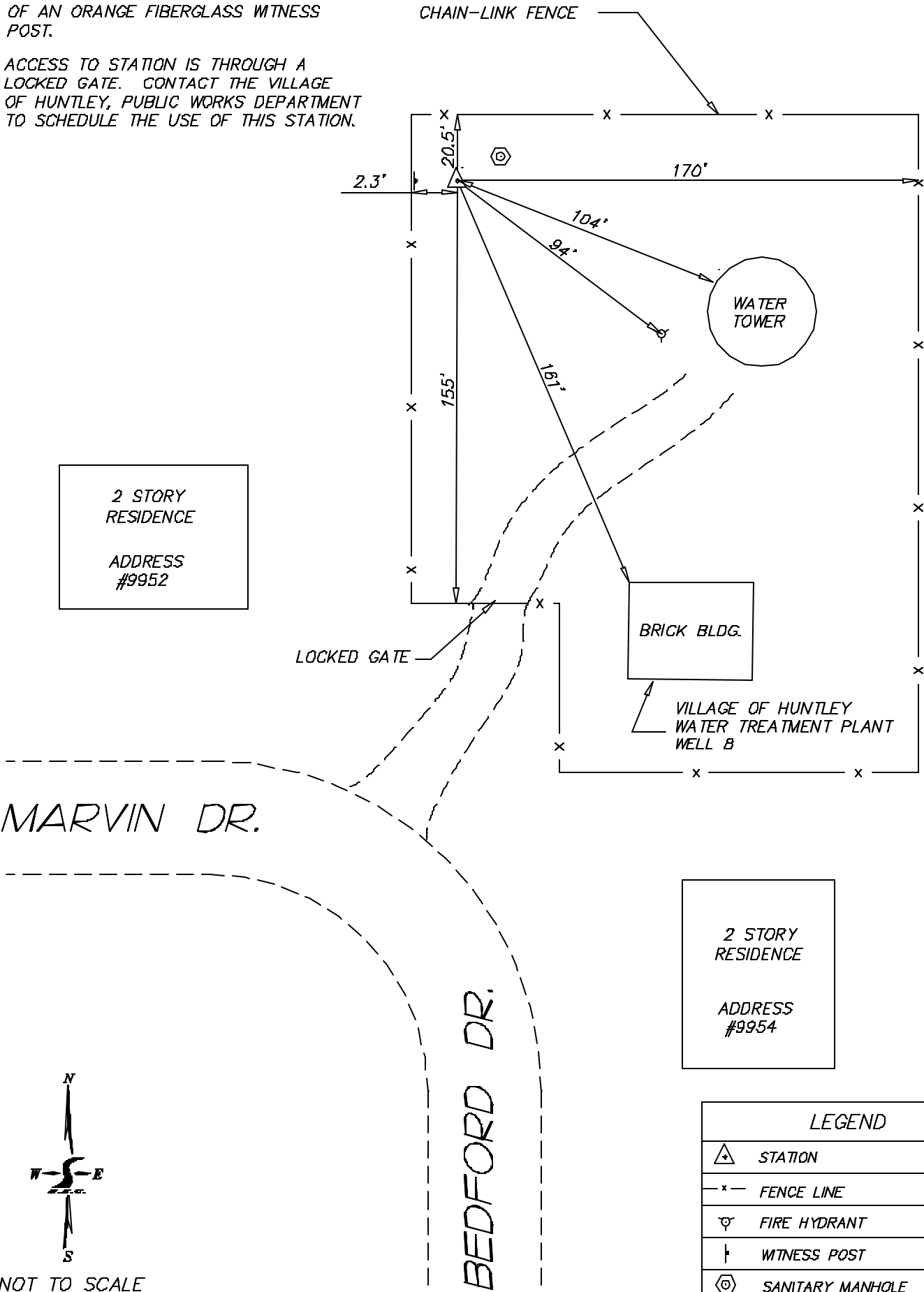


HUNTLEY WELL B

NOTE: STATION IS 2.3 FT EAST OF AN ORANGE FIBERGLASS WITNESS POST.

ACCESS TO STATION IS THROUGH A LOCKED GATE. CONTACT THE VILLAGE OF HUNTLEY, PUBLIC WORKS DEPARTMENT TO SCHEDULE THE USE OF THIS STATION.



LEGEND	
	STATION
	FENCE LINE
	FIRE HYDRANT
	WITNESS POST
	SANITARY MANHOLE

NOT TO SCALE