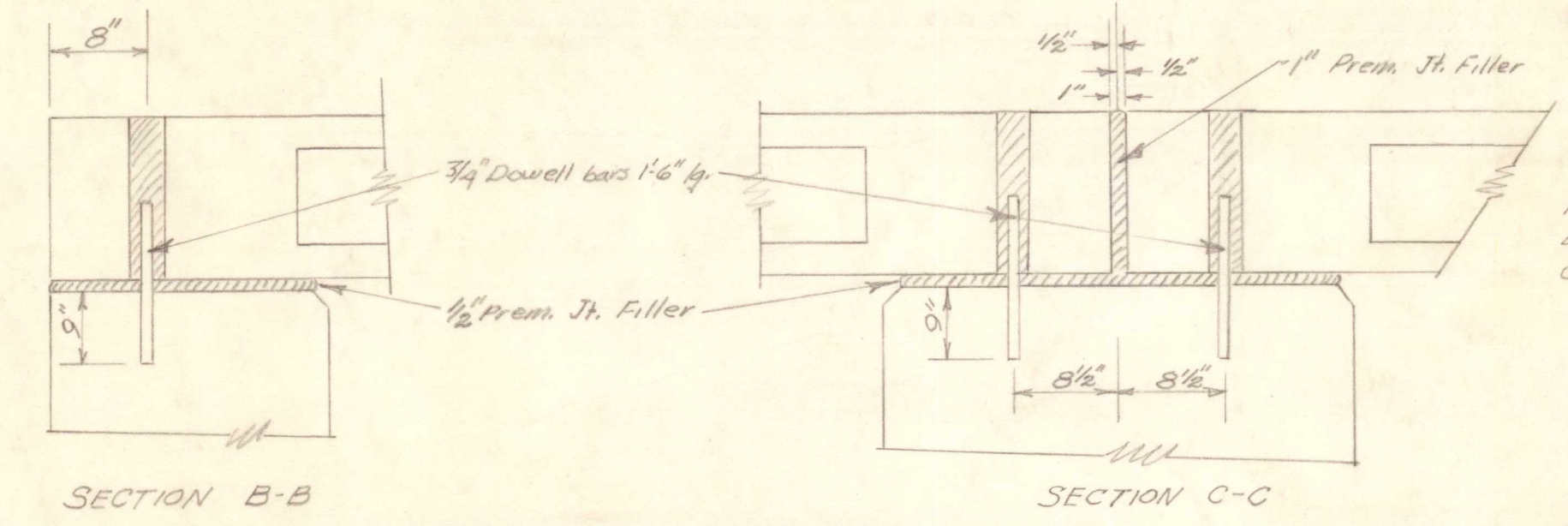
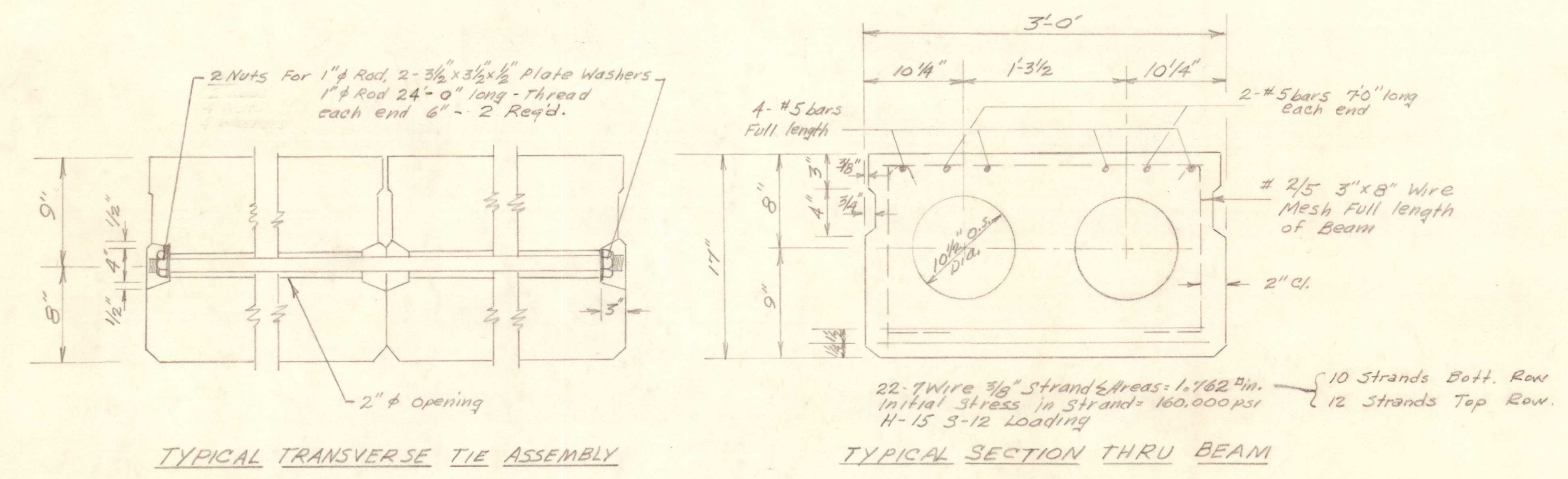
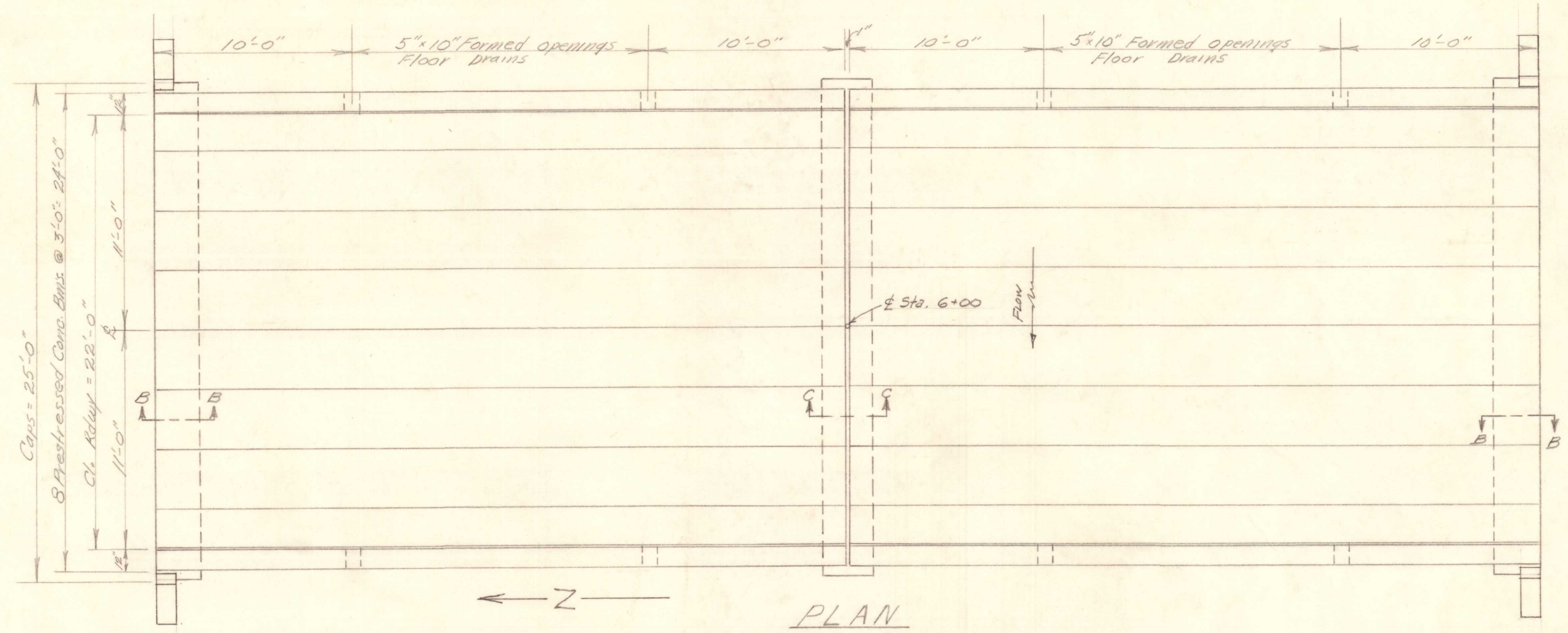
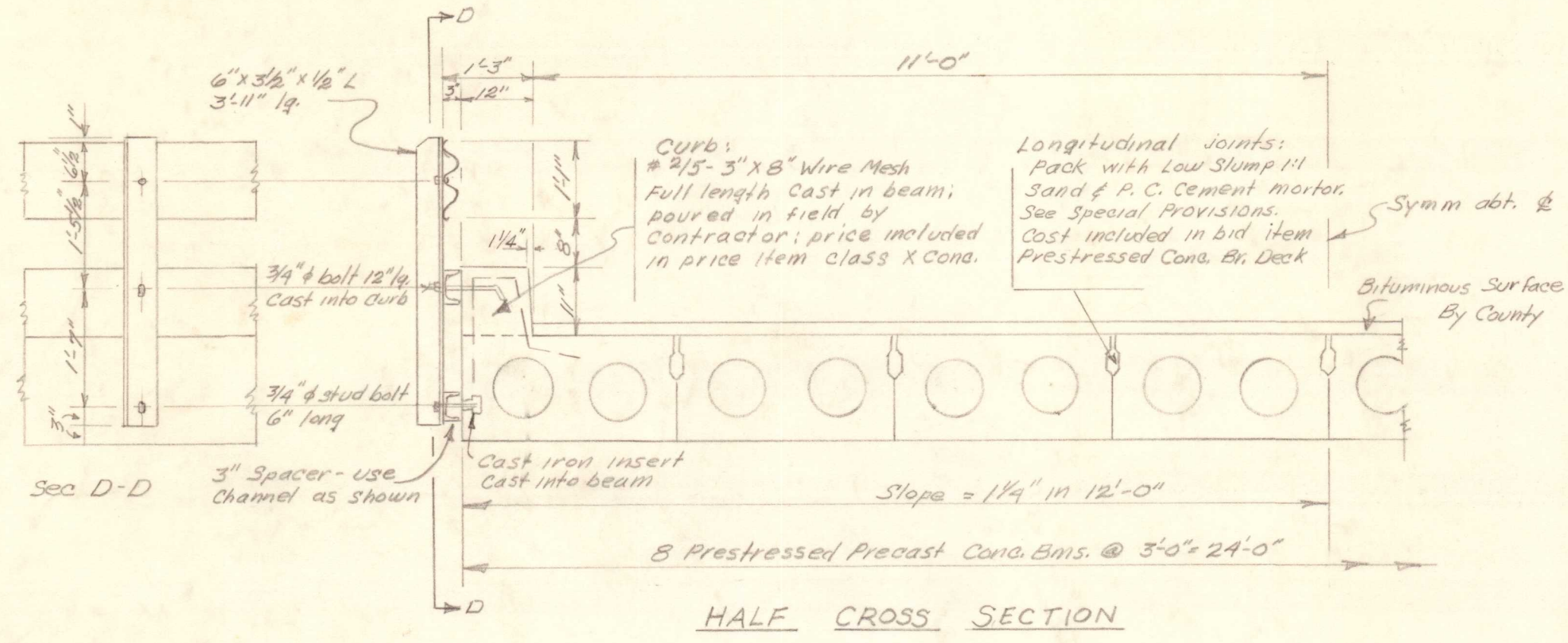
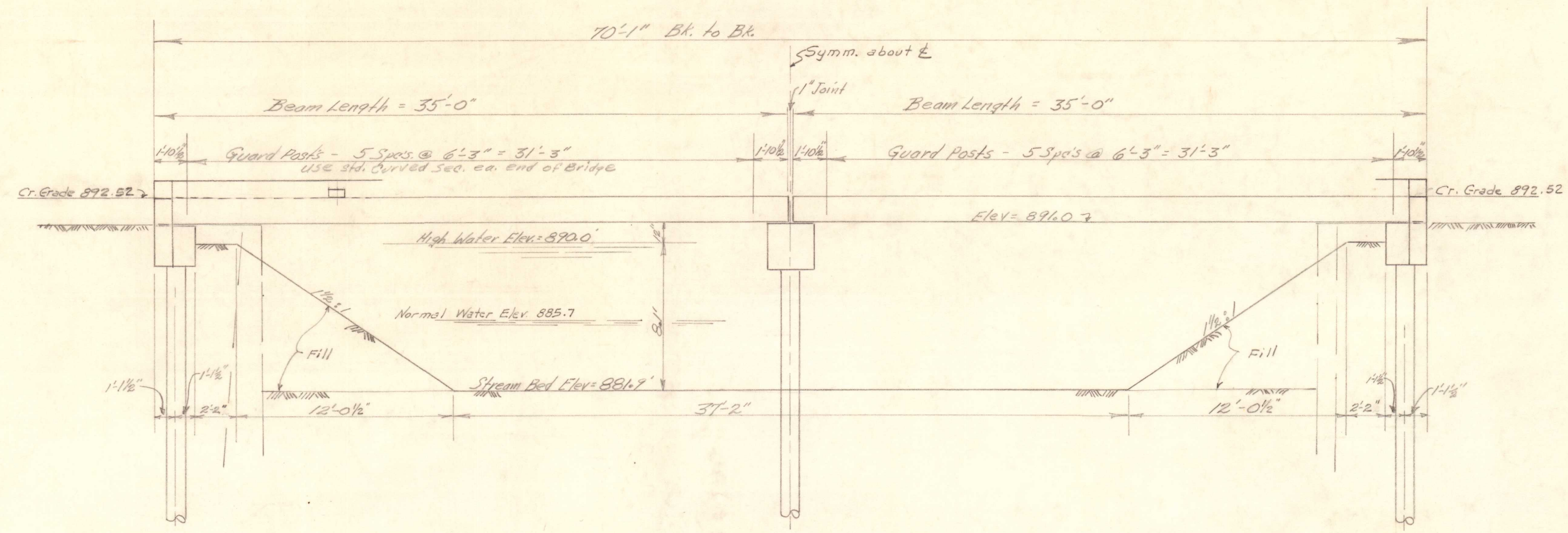


B.M. Top of S.W. Wingwall existing Bridge Elev = 895.75  
 □ on Cur. Headw. N.W. at Brookdale Bridge Elev = 896.98

Existing Structure: Steel Truss - one span @ 58' - 14' Rdwy.  
 Materials to be Salvaged for County: Traffic plates - 6" I Beams - Sheet Piling in North Abutment



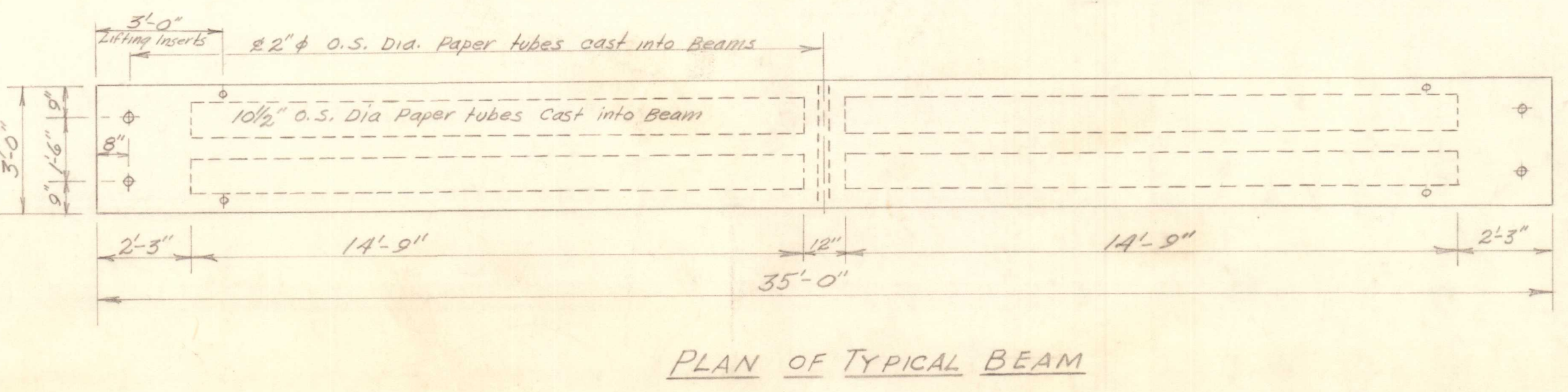
After Beams are in place, drill holes in pier & abut. caps and gravel dowell bars into caps & beams. Cost to be included in unit price bid for Bridge Deck

**GENERAL NOTES**

Class X Concrete shall be used in pile caps and curbs.  
 For Item "Precast Prestressed Concrete Bridge Deck" see Special Provisions.  
 Handrail shall be paid for as "Metal Plate Bridge Rail" and shall include all posts, shores, channels, bolts, nuts, and washers required for splicing and fastening to bridge - Handrail shall receive one shop coat of red lead paint and two field coats of aluminum paint. Paint shall be furnished and applied by the contractor. See Special Provisions.

One Creosoted Timber Test Pile shall be driven in permanent location

The existing Bridge is to become the property of the Contractor, with the exception of the steel traffic plates and the bridge planks, which are to become the property of McHenry County Highway Department, see Art. 49.3 (a), Standard Specifications for Road and Bridge Construction, January 2, 1958.



**TOTAL BILL OF MATERIAL**

ITEM	UNITS	TOTAL
Precast Prestressed Concrete Bridge Deck	Sq. Ft.	1680
Class X Concrete (5000 psi 4" curb 4.5)	Cu Yds.	20.9
Reinforcement Bars	Lbs.	2230
Metal Plate Bridge Rail	Lin. Ft.	132
Furnishing Creosoted Piles 20' to 38' H.	Lin. Ft.	275
Driving Timber Piles (25' lg)	Lin. Ft.	275
Furnishing Metal Pile Shells (14" O.D. 30' lg)	Lin. Ft.	180
Driving and Filling Shells (30' lg)	Lin. Ft.	180
Test Piles (Creosoted Timber)	Each	One
Removal of Existing Structures	Each	One
Name Plates	Each	One

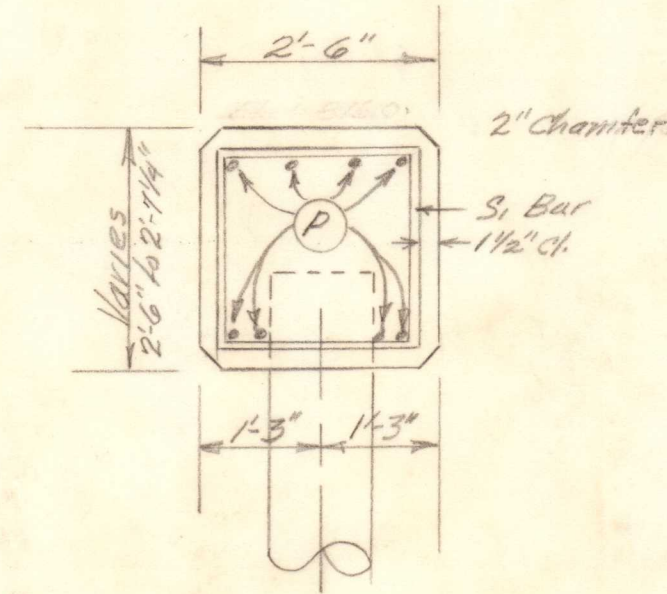
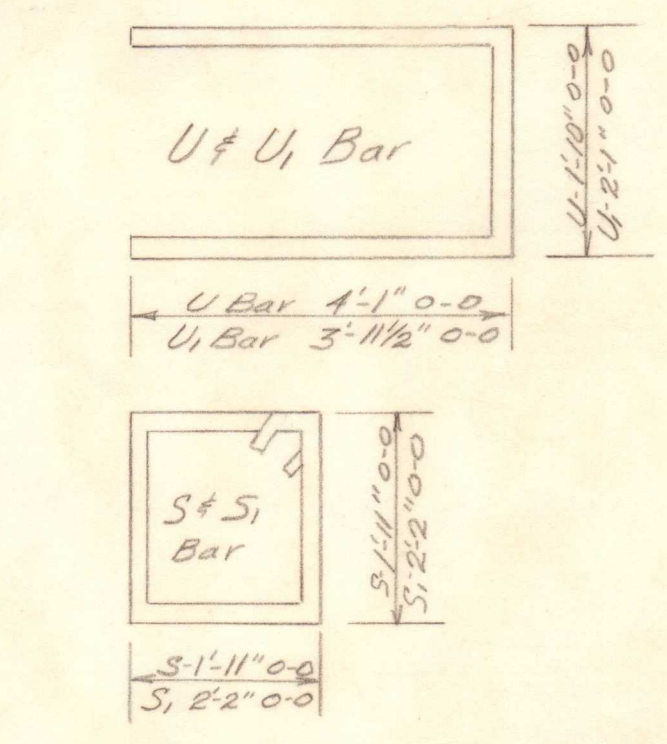
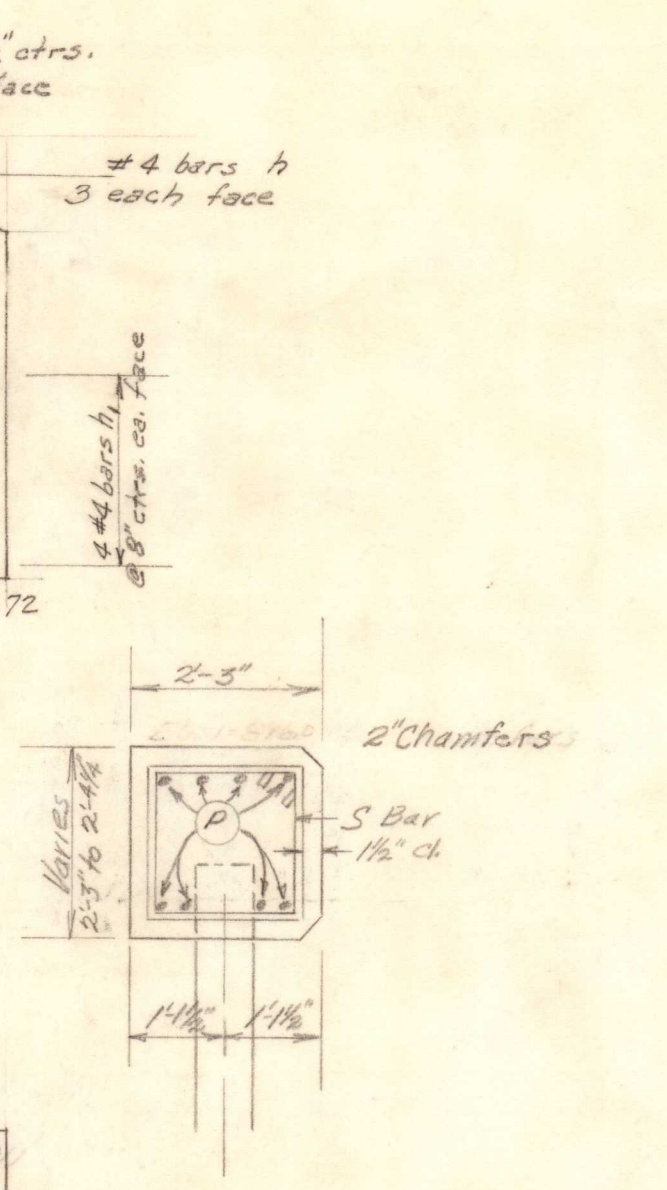
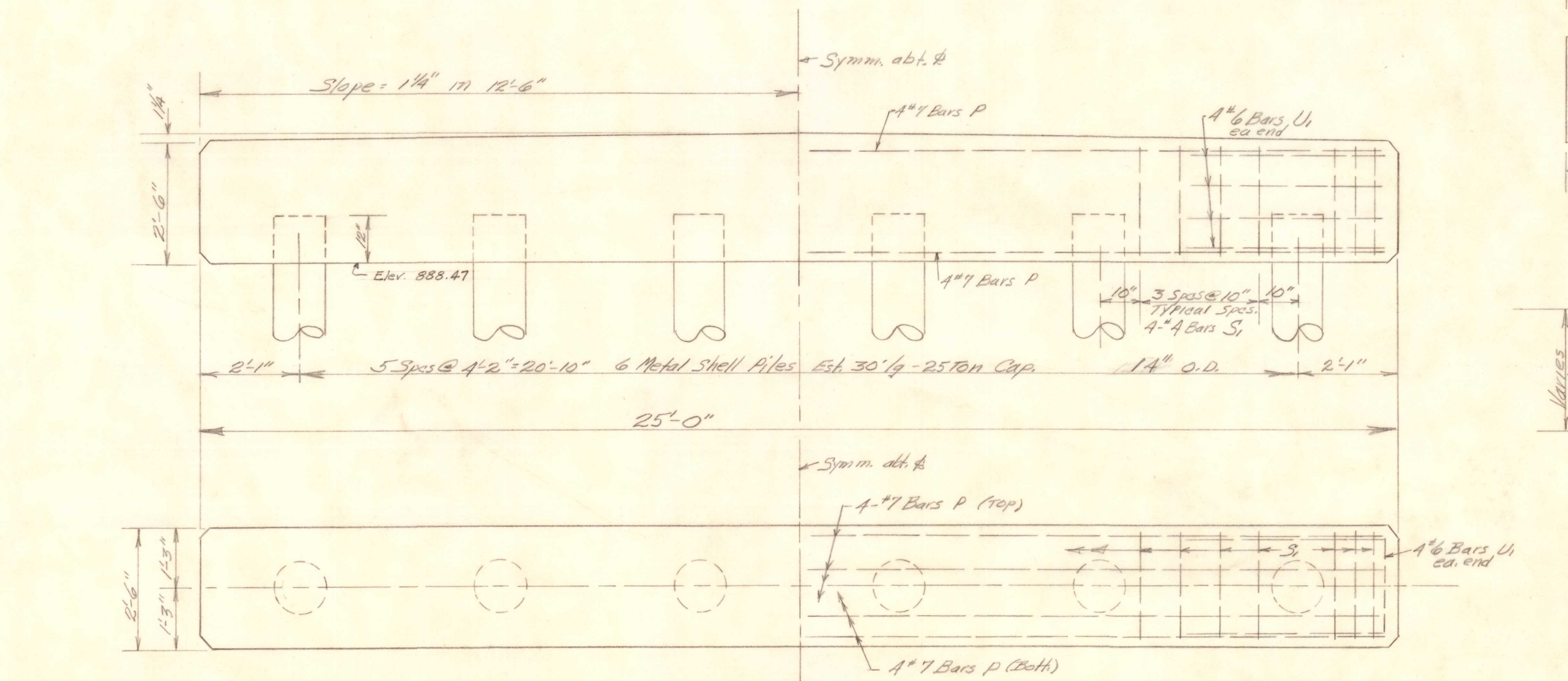
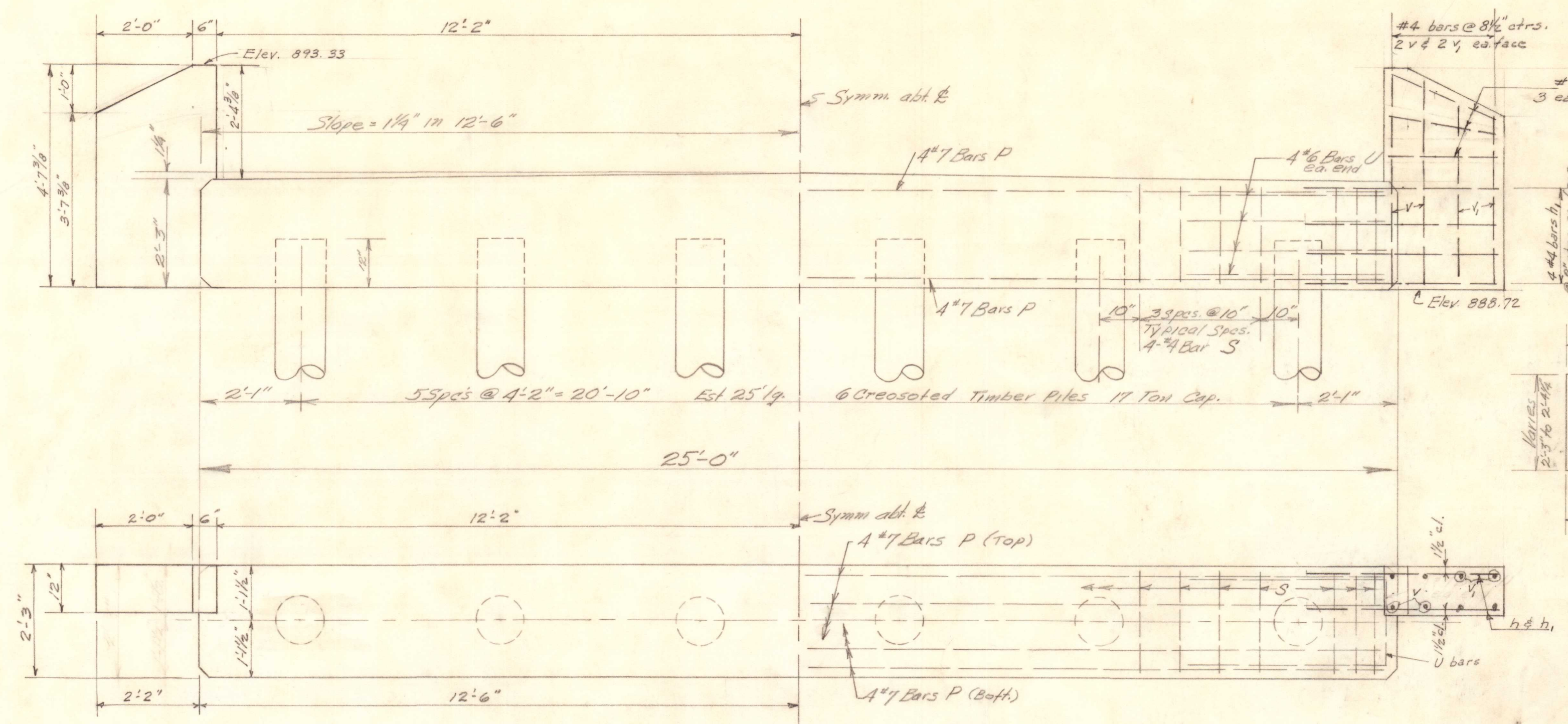
**WATERWAY INFORMATION**

Drainage Area 12,000 Acres  
 Character rolling, cultivated  
 Proposed Opening 390 Sq. Ft.  
 Loading: H-15 S-12

PAULSEN BRIDGE  
 HARTLAND TOWNSHIP  
 McHENRY COUNTY

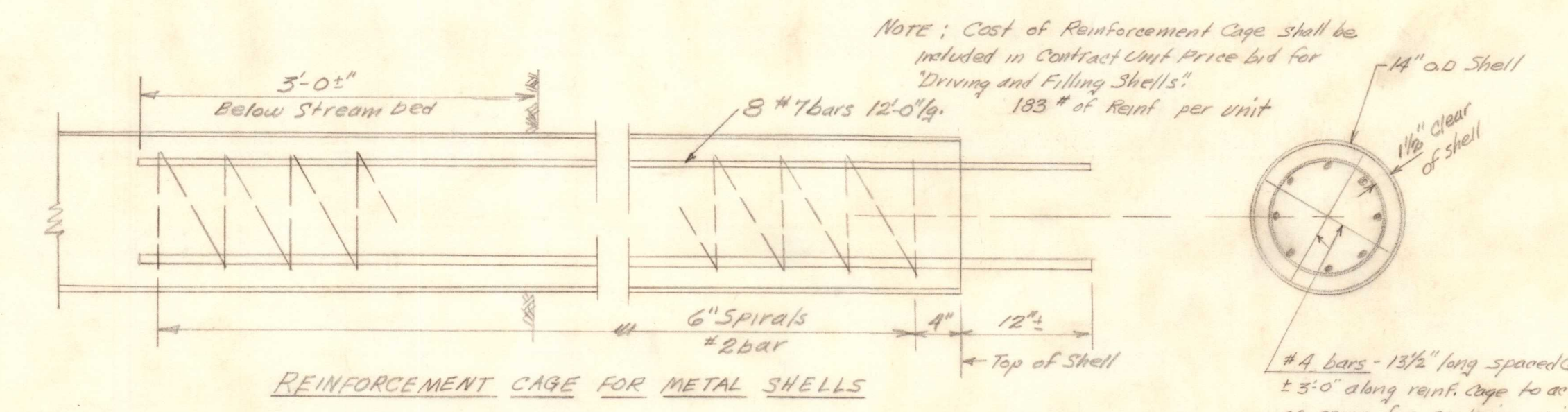
March 1958  
 R.D. - R.S.





PAULSEN BRIDGE  
 BUILT 1958 BY  
 McHENRY COUNTY  
 HARTLAND TOWNSHIP  
 LOADING - H 15-S 12

NAME PLATE DETAIL  
 See Standard 2.113



REINFC. BARS - 2 ABUTS. & 1 PIER

Bar	No.	Size	Length	Shape
P	24	#7	25'-0"	—
U	16	#6	10'-0"	□
U1	8	#6	10'-0"	□
S	52	#4	8'-0"	□
S1	26	#4	9'-0"	□
h	24	#4	2'-3"	—
h1	32	#4	4'-0"	—
v	16	#4	4'-3"	—
v1	16	#4	3'-6"	—

NOTE: Cost of Reinforcement Cage shall be included in Contract Cost-Price bid for "Drilling and Filling Shells". 183 # of Reinf. per unit

14" O.D. Shell  
 1 1/2" Clear of shell  
 #4 bars - 13 1/2" long spaced @ ± 3'-0" along reinf. cage to act as spurs for centering unit in shell.