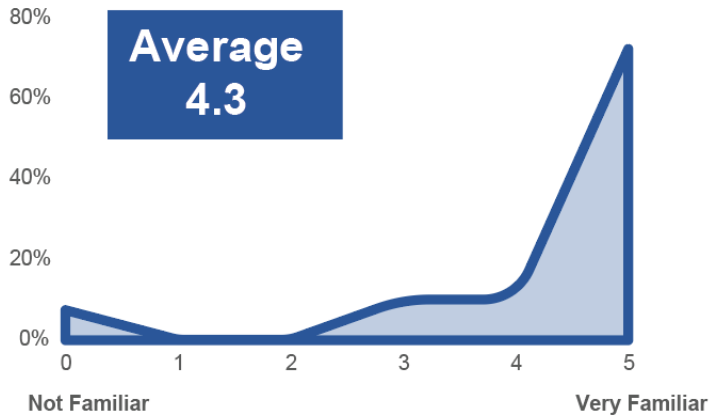


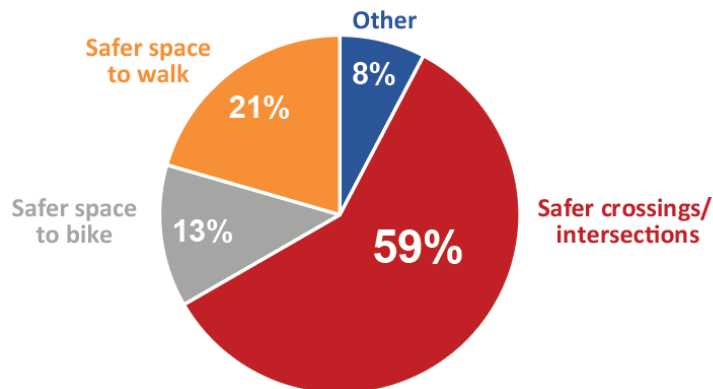
### How familiar are you with Ackman Road?

73% of participants are very familiar with Ackman Road.



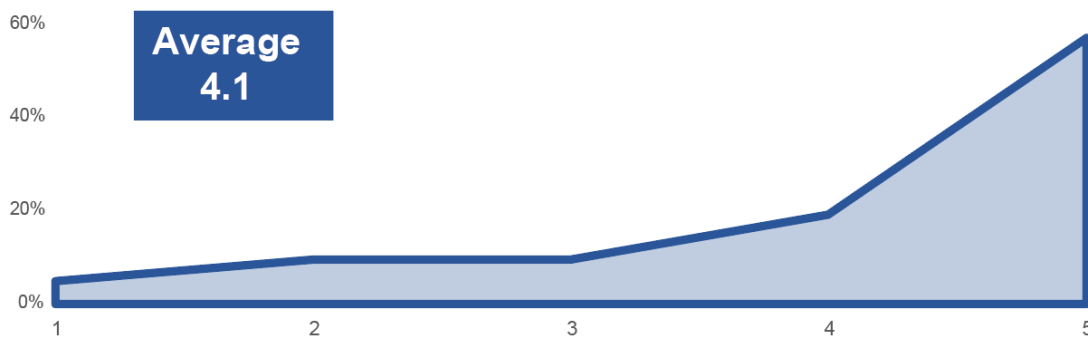
### What are you most interested in being improved along Ackman Road?

Over half of the participants are most interested in safer crossings/ intersections along Ackman Road.



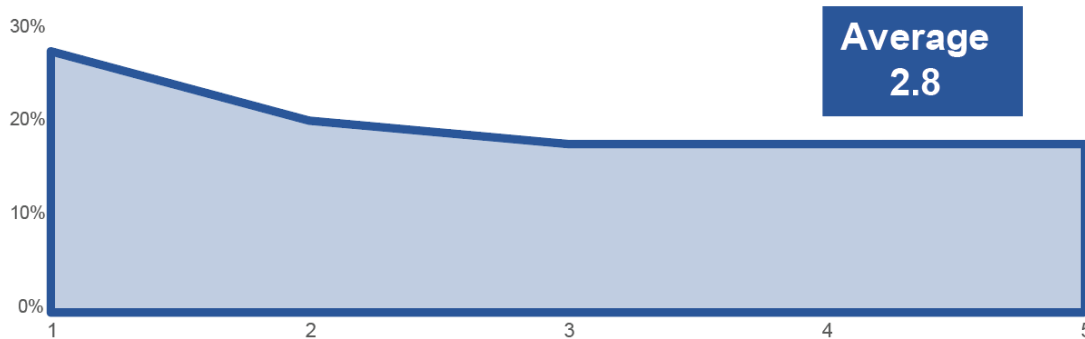
### How comfortable do you feel driving through roundabouts?

76% of participants are comfortable or very comfortable driving through roundabouts.



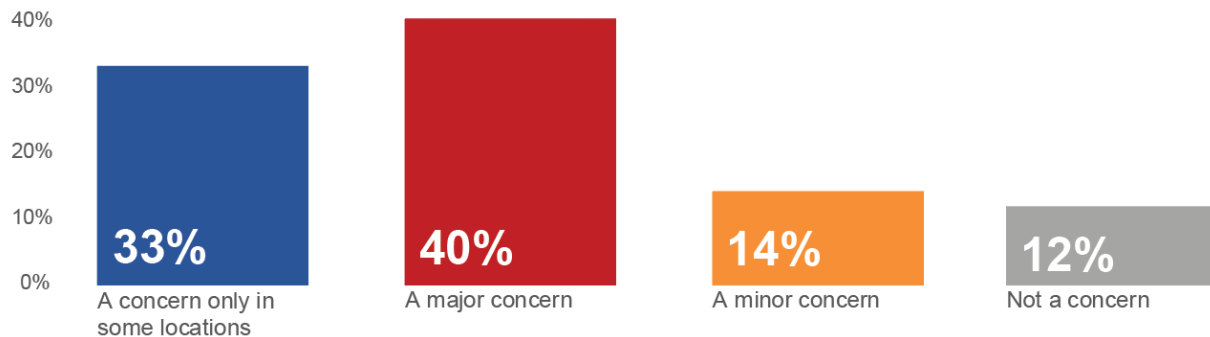
### How comfortable do you feel walking and biking through roundabouts?

Nearly half of participants (48%) are not comfortable biking or walking through roundabouts.



### Do you feel speeding on Ackman Road is a concern?

40% of participants reported speeding is a major concern, while a third of participants reported speeding is a concern only in some locations.



### Where should space for bicycles and pedestrians be provided?

Nearly half of respondents think space for bicycles and pedestrians should be provided on an off-street shared use path.



### Are on-street bicycle accommodations important to you?

66% of participants report on-street bicycle accommodations are important to them.

**What side of Ackman Road would you prefer to see an off-street shared-use path?**

Nearly half of the respondents would prefer to see an off-street shared use path on the south side of Ackman Road, while nearly a third of respondents would like to see an off-street shared-use path on both sides of Ackman Road.

1. North side, 24%
2. South side, 44%
3. Both sides, 32%

**What type of crossing would you prefer to use while crossing Ackman Road?**

76% of participants reported they would prefer to use a mid-block crosswalk with a flashing beacon.



**On what type of trail would you feel most comfortable?**

68% of participants shared they would feel most comfortable on a rural typical section – without a curb, further setback from the road.

**What else is important to you in a bike facility?**

Participants reported safety followed by connectivity and surface type were most important in a bike facility.

*Responses:*

- *Blacktop*
- *Clear markings, flashing lights*
- *Connectivity (x3)*
- *Connectivity, safety, signage*
- *Continuity*
- *Continuity, wide*
- *Nothing*
- *Open scenery*
- *Paved*
- *Proper directional markings*
- *Rest area*
- *Restrooms*
- *Running grade*
- *Safe crossings*
- *Safety*
- *Safety, accessibility, width*
- *Safety, accessibility, connectivity*
- *Safety, not on road with cars*
- *Safety, traffic distance*
- *Safety, width*
- *Separate*
- *Smooth surface*
- *Supplies*
- *Useable for all, continuous and protected*
- *Well laid out, enough signage*
- *Width, blacktop*

**Have you traveled through a roundabout before?**

All participants have traveled through a roundabout before.

**How comfortable do you feel driving through roundabouts?**

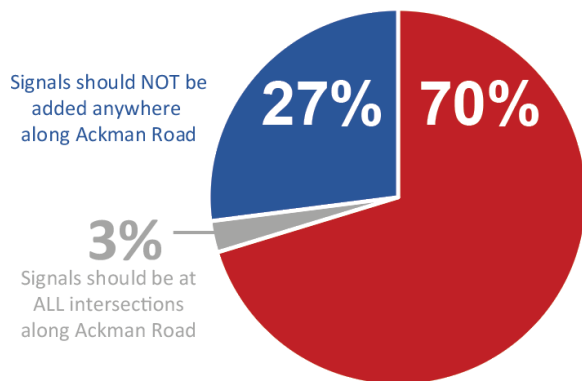
On average, participants reported they feel comfortable driving through roundabouts. The reported average, 4.2, is about the same from the beginning of the poll.

**How comfortable do you feel walking and biking through roundabouts?**

On average, participants reported they feel neither comfortable or uncomfortable walking and biking through roundabouts. The reported average, 3.2, is about the same from the beginning of the poll.

**What do you think about adding traffic signals to an intersection?**

The majority of respondents (70%) think signals should be added in select locations along Ackman Road.



**Which intersections do you think are most appropriate for roundabouts?**

Huntley Road followed by Redtail Drive were thought to be most appropriate for roundabouts.

1. Huntley Road, 26%
2. Redtail Drive, 20%
3. Swanson Road, 17%
4. Lakewood Road, 14%
5. Haligus Road, 6%
6. Golf Course Road, 6%

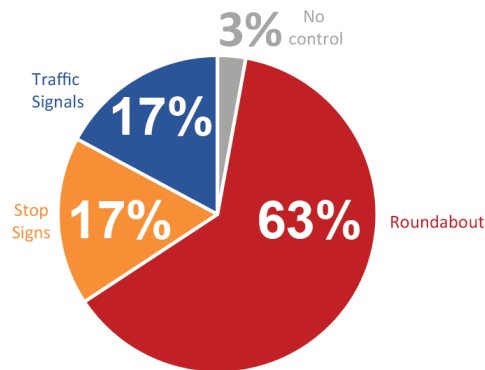
**Which intersections do you think are most appropriate for a traffic signal?**

Golf Course Road was thought to be most appropriate for a traffic signal. Nearly a quarter of respondents reported none of the intersections were appropriate for traffic signals.

1. Golf Course Road, 41%
2. None, 24%
3. Lakewood Road, 12%
4. Haligus Road, 9%
5. Huntley Road, 6%
6. Redtail Drive, 6%
7. Swanson Road, 3%

**Which type of intersection design do you feel reduces traffic speed the most?**

63% of respondents felt roundabouts reduce traffic speeds the most.



**Which intersection option do you prefer [for Huntley, Swanson, and Redtail]?**

60% of the respondents preferred Option 5 (*Roundabouts at the Reconfigured Huntley/ Swanson and then at Redtail*).

1. Option 1, 0%
2. Option 2, 12%
3. Option 3, 28%
4. Option 4, 0%
5. Option 5, 60%

**Do you have any additional concerns or comments for Huntley/ Swanson/ Redtail?**

- *Concern... impact to floodplain/ environmental areas. Please work with MCCD on mitigation.*
- *Driving on shoulder is dangerous*
- *Environmental concerns for waterways affected.*
- *environmental impacts to Kishwaukee Creek*
- *I use Redtail or Huntley EVERY day. I believe roundabouts are the best and safest option. Those turns are so dangerous.*
- *I'd love to realign Swanson to Red Tail, but I'm concern about the cost of crossing the creek water, etc*
- *I'm concerned that the presentation of Option 5 isn't realistic due to the many constraints. I'd love to see it happen but have doubts and we need solutions sooner, not later here. Section two is dangerous. It is only a matter of time before major*
- *Is that the realignment of Swanson?*
- *Length of time for construction*
- *Need upgrades to the road for shoulders allowing bikes*
- *Not right now*
- *Our driveway is dead end into Swanson  
So cars drive straight into our driveway when heading north on Swanson  
We need the safest alternative*
- *Ped and bike safety.*
- *Swanson & Redtail are the priority intersections*
- *The proposal is all or nothing. What are intermediated solutions? It is not that bad if turn lanes are added.*
- *There will be considerable expense to introduce signaling or a roundabout at this intersection. Will sidewalks be added as well? In particular Swanson has none.*
- *What is the environmental impact to the creek, etc connecting Swanson to Red Tail?*
- *Will the driveway of Lou Malnati's impact the intersection? If you go with either roundabout or traffic signal.*

### What do you think of the realignment of Redtail?

Two-thirds of respondents reported they are in favor of the realignment.

- *A realignment makes sense from a traffic perspective. Just hope it isn't too impactful environmentally, which of course it will be but these can be offset*
- *Absolutely Oppose- too much improvement that is not justified. A solution looking for a problem.*
- *An idea that is long overdue. Too many significant intersections in this section currently.*
- *I am not in favor due to the cost of acquisition of property. Otherwise it's a good fix to eliminate an intersection*
- *I fully support it to remove the T at Swanson. I use all 3 of these intersections and they are all very dangerous. Let's plan for long term safety and traffic*
- *I like it a lot. However, I have doubts that financially it is remotely feasible. ROW and environmental impacts alone will delay this improvement from becoming a reality for how long?*
- *I like it but I'm concerned about cost/environment*
- *I like it it eliminates an intersection and gets away from Huntley*
- *I would like more information about what this would look like.*
- *I'm all for it! But interested in what the real cost with all the impacts (property, environmental) will be. If the cost of the impacts is too high I fear it will not have a lot of support*
- *Is that the realignment of Swanson - if so - I am good with it.*
- *It's fine*
- *Not a good idea...*
- *Not completely necessary, but would help*
- *Seems like a good idea as long as it doesn't impact the environment*
- *Segment 3 due to close relationship to Randall Rd*
- *Too costly. Save your money and build roundabouts.*

### What segment should be the first focus?

The majority of participants (87%) reported the County should focus on Segment 2: Redtail Drive to Huntley Road first.

### Which issues are the highest priority?

1. Safety, 43%
2. Intersections, 35%
3. Bicycle/Pedestrian, 13%
4. Traffic Operations, 9%

**Do you have any additional concerns for Ackman Rd?**

- *Adding traffic signals at each intersection would take away from the rural setting. Please consider RAB first if they are appropriate.*
- *Does the study show that the intersection at Ackman and Lakewood is working well? Same with the intersection at Ackman and Haligus?*
- *Ensure good continuous traffic flow and consider turn lanes on Ackman at Swanson and Redtail before the oversized improvements. Also, the realignment of Swanson is far too costly and environmentally damaging for the issue it intends to address.*
- *I do not want four lane road between golf course road and Westport Ridge. I want Ackman to stay two lanes.*
- *Needed improvements are pretty far out. I'd suggest considering interim improvements to increase safety at intersections.*
- *Our most important concern is to have bike and pedestrian safe assess to Ackman Rd.*
- *Speed and Safety, as it tends to be traveled by many different users.*
- *what are the municipal priorities?*
- *Thank you all, great presentation, very informative and I look forward to seeing the preferred options.*
- *Thanks for an excellent presentation and meeting! :)*
- *Very nice job tonight.*